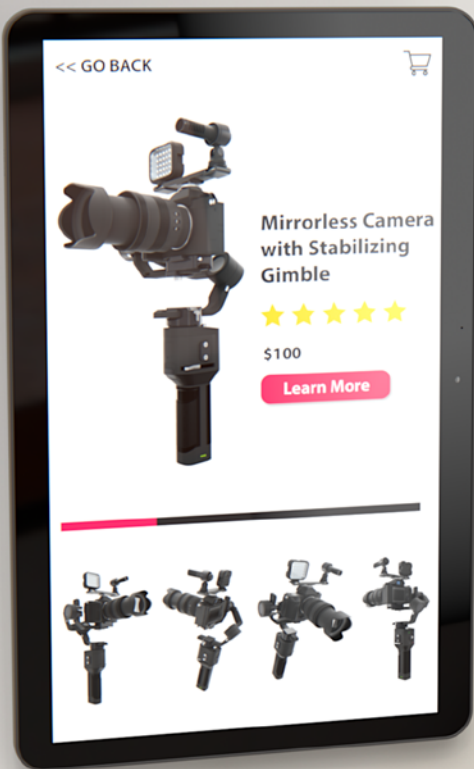




# Zebra Kiosk System

**Unmatched manageability, complete flexibility  
and exceptional consumer design**

# Meet the needs of the new self-service economy with Zebra Kiosks



## Deliver the instant service today's customers demand...

Self-service is not only an acceptable means of providing service—your customers expect it. Just over half of today's customers expect instant service.<sup>1</sup> And 81% of today's consumers want more self-service options. Deliver the service your customers demand and increase customer loyalty with Zebra Kiosks.

## ...drive operational costs down

Zebra kiosks free your workers to spend more time on other tasks, increasing workforce productivity and operational efficiency. And digital signage can provide workers with the real-time information required to improve workflow efficiency and increase throughput—without adding staff.

## ...and drive revenues up

Easily upsell and cross-sell with Zebra kiosks. Whether customers are making a purchase or comparing items in a retail store, or ordering dinner at a quick serve restaurant, you can instantly and automatically present complimentary items—increasing sales, decreasing the cost of sales and increasing profitability. And digital signage can improve the visibility and success of your promotions and more.

# Zebra Kiosk System— a kiosk for every space



Easily create a kiosk for **self-service**, **assisted service** or **digital signage** that will fit in any space, any environment, any application.

**Better service. Happier customers. A better bottom line.**

Retail | Hospitality | Travel | Healthcare | Parcel Management | Manufacturing  
Warehousing | Banking | Car Rentals | Government

# Why choose Zebra Kiosks?

## Unmatched manageability

### Comprehensive hardware control via your EMM

- Powerful cloud-based content management
- Easy to set up, secure, manage and optimize with Zebra DNA™
- Uses the same tested and proven Zebra management tools for Zebra devices

## Exceptional consumer design

### Appealing and Intuitive design

- Intuitive multi-touch bright screen
- Accessibility compliance through a flexible mounting system

## Complete flexibility

### Choose your size, orientation and peripherals

- Create a single- or double-sided kiosk
- Mount anywhere—wall, desk, counter or floor
- Plenty of power for payment terminals, scanners and more
- Power over Ethernet (PoE) to simplify and reduce deployment costs

## All-day everyday reliability

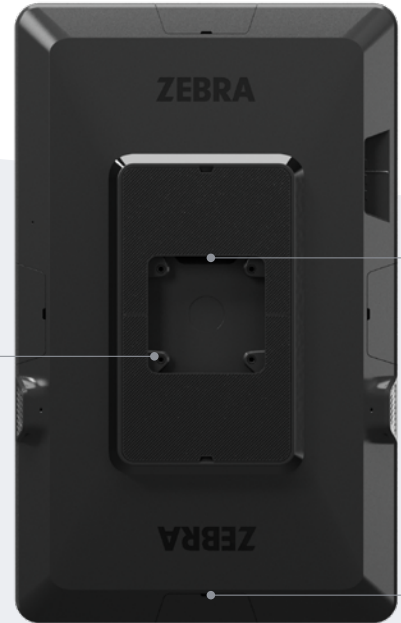
### Built-in durability

- The display is sealed and ball impact tested
- Maximize performance and uptime with Zebra OneCare™ maintenance plans



# KC50 Android Kiosk Computer

## The heart of the Zebra Kiosk System



### Industry-leading standard Zebra platform

#### Key Features

##### Processor

Qualcomm® 5430, 2.1 GHz Octa Core

##### Operating System

Future proof OS support, through Android 16

##### Display

15 in. or 22 in., portrait or landscape

##### Durability

Ball-drop display test, IP65 sealing, secured connectors

##### Voice Support

Two integrated noise cancelling microphones and dual 1W speakers

##### Digital Assistant Support

Enable conversational self service through Zebra's platform APIs

##### Scanning

Optional Z-Flex scanner SE4720

##### Payment Support

Add a payment terminal via a USB connection or integrate tap to pay

##### Non-Payment Tap Transaction Support

Supports Apple VAS and Google Smart Tap

##### Power Options

Power it anywhere easily and cost-effectively with Power over Ethernet (PoE)—no expensive power drops or unsightly extension cords needed

### The flexibility to mount where you want... and build what you need

#### USB Peripheral Support

Create a dual-display kiosk—just add the TD50 display via the USB-C display port; connect any USB-enabled device—such as a scanner or printer—via the USB-A port

#### VESA Mounting

Choose any kiosk stands or cabinetry compatible with VESA75 and VESA100 standards to mount anywhere—wall, counter, desk and floor

#### Z-Flex Wired Peripheral Support

Z-Flex connectors on all four sides allow you to easily add an optional scanner, lightbar, and more

# Unmatched manageability ...the Zebra platform difference



Manage your kiosk hardware and kiosk content with the **same proven and tested tools** you use to manage all of your Zebra mobile computers and tablets, simplifying and reducing the cost of device management.

## Zebra Kiosk Hardware Management

No cost management tool

Complete remote control of over 1,000 device configurations through your EMM with Zebra OEMConfig powered by Mobility Extensions (Mx)

Comprehensive device control, including unique kiosk-features: a secondary display, screen saver, power settings and all connected peripherals

## Zebra Kiosk Content Management

Choose basic or advanced content management:

Zebra OEMConfig powered by Mx provides basic content management capabilities—no fees or license required

Zebra DNA Cloud makes complex content management simple with a powerful visual interface, cloud storage for all your content and rich content control and testing (license required)

## Zebra DNA for Mobile Computers

Maximize visibility, management simplicity and uptime with software tools that make Zebra devices easier to setup, secure, manage and optimize

Add new capabilities that allow devices to adapt to the workflows of today and tomorrow, improving workforce efficiency and productivity.

Makes Zebra devices lifetime ready by enabling maximum performance year after year

# A full portfolio of services to support every aspect of your kiosk deployment

From everyday support to analytics that enable proactive device management to convenient on-device video training

## **Zebra OneCare™ Select All-inclusive maintenance plan**

Covers everything—including accidental damage, normal wear and tear

Like new device shipped same day for next business day delivery

Devices are fully commissioned and ready to use, right out of the box

## **Fastrack—Onsite ‘white glove’ service option**

Delivery and installation of a ready-to-use replacement unit

Removal and return of defective kiosk to Zebra

Option available for Zebra OneCare Select Maintenance plan

## **Professional Services— From concept to deployment**

Gold Build ensures your kiosks operate at peak performance

Stage kiosks for operation with the right OS, apps, security features and settings

Kitting—everything in one box, an assembled kiosk, accessories and documentation

## **VisibilityIQ Foresight™— Proactive actionable intelligence**

Cloud-based ‘access anywhere’ dashboard provides insights on all devices

Address potential device issues before they impact your business

Easy-to-grasp color-coded dashboard plus alerts





Business Solutions  
1.800.800.0014

Enterprise Solutions  
1.800.369.1047

Public Sector Solutions  
1.800.800.0019

[www.connection.com/ZebraRetail](http://www.connection.com/ZebraRetail)

1. CXM Today, 81% of Consumers Say They Want More Self Service Options, May 25, 2022;  
<https://cxmtoday.com/news/81-of-consumers-say-they-want-more-self-service-options/>

2. Today's Customer Has a Need For Speed; Shep Hyken, contributor; Forbes; January 8, 2023, (citing Jay Baer study: A Time To Win



ZEBRA and the stylized Zebra head are trademarks of Zebra Technologies Corp., registered in many jurisdictions worldwide. Android is a trademark of Google LLC. All other trademarks are the property of their respective owners. ©2024 Zebra Technologies Corp. and/or its affiliates. 12/03/2024