

# Microsoft Education Transformation Framework



We understand that districts across the nation are under more pressure than ever before to find ways to improve teaching and learning in remote, hybrid, and face-to-face settings. Some districts go about this through device purchase only, one school at a time. As a result, siloed environments are created rather than a unified district with a common vision.

## Navigate the Complexity of Transformation

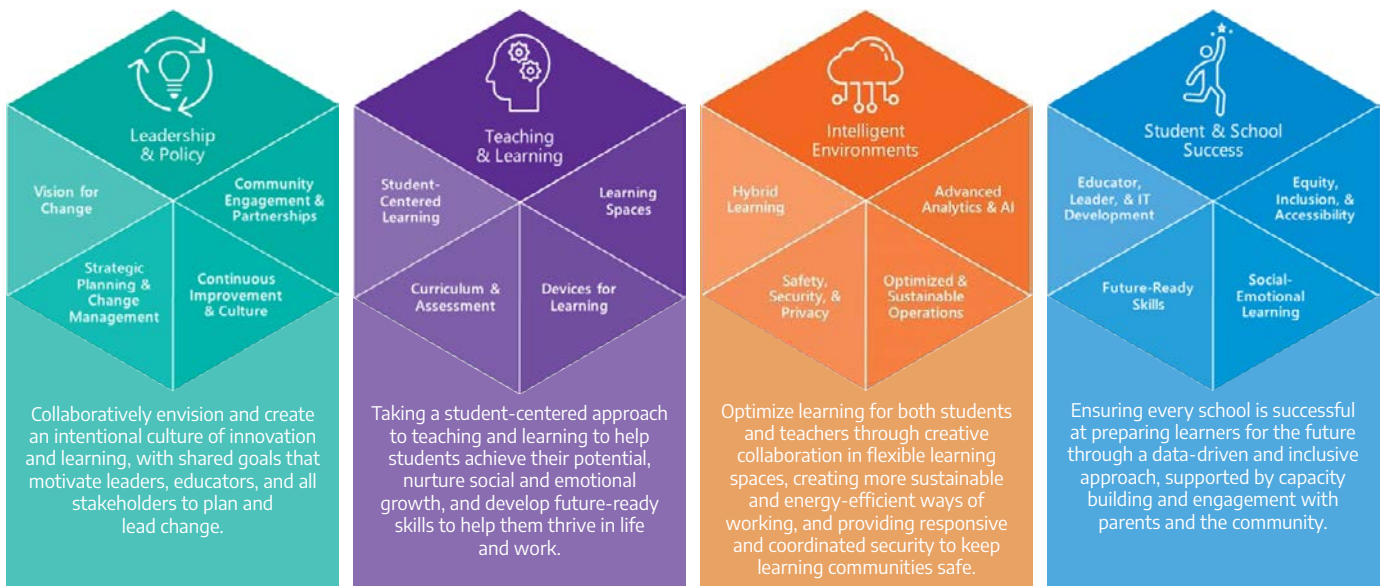
Through the implementation of Microsoft's Education Transformation Framework (ETF), our team of certified education experts can collaborate with you to create a roadmap that takes the traditional way of doing things and challenges teachers and leaders to be more innovative and intentional about how they teach students. Together we can create a plan where teaching and learning are specific and personalized while engaging parents and the community in creating a district wide culture of inclusivity and learning for all.

## What Is ETF?

- Comprehensive framework designed to help leaders work together to create an intentional culture of innovation and learning
- Embedded opportunities to uncover strengths and opportunities that lead to strategic planning for systemic, long-term changes
- Comprehensive learning opportunities that help schools and districts take a student-centered approach to teaching and learning, nurture social and emotional growth, and develop future ready skills to help students thrive in life and work
- Optimized learning for both students and teachers through collaboration in flexible learning spaces

ETF is specifically built to support education leaders to more effectively transform their systems and learning institutions, by dividing the work into 4 pillars:

- Leadership and Policy
- Teaching and Learning
- Intelligent Environments
- Student and School Success



1.800.800.0019  
www.connection.com/ps