

Brochure

Harness the power of classroom technology

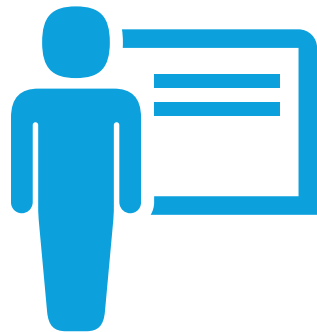
HP Classroom Manager 3.0



Meet the new HP Classroom Manager



HP's premier classroom management software is now even better. HP Classroom Manager 3.0 delivers exciting new features and support across a wide range of operating platforms—offering an intuitive, easy-to-use experience for students, teachers, and IT administrators.



Features and benefits for educators¹

Management

Classroom management

HP Classroom Manager 3.0 makes it easy for teachers to manage their classroom—including full control over student devices—all from the teacher PC.

- **Manage student PCs:** power on/off all computers; send a remote log in and remotely log off students; blank student screens and lock mice and keyboards when instructing
- **Share and collect files:** distribute files to one or multiple student PCs; automatically collect files with each student's details appended
- **Get support:** request tech assistance with a single click
- **Customize the experience:** link specific features to individual teacher profiles; use layouts to match teacher PC with the physical layout of the room
- **Reinforce good behavior:** reward individual students for their effort or good behavior with visual rewards

Printer and device management

Ensure students use resources appropriately with advanced printer and device management features available in real-time on the teacher PC.

- **Control printer usage:** prevent printing altogether or limit printing to certain printers; require teacher authorization before printing
- **Monitor printing volume:** limit students to a certain number of pages; display a real-time print indicator showing which students are printing and how many paused print jobs require teacher attention
- **Monitor devices:** prevent new network connections; prevent data from being copied to or from the device with CDR/DVD and USB
- **Remotely power devices on/off:** easily power student devices on and off from the teacher console to avoid additional power consumption

Student Register

Student Register makes it easy to request, store, and categorize both standard and custom information from students. Teachers can print the student register whenever they need, and even assign customized icons to students.

Student Information Bar

The Student Information Bar, located at the top of student screens, shares important information with the student such as the current lesson, time remaining, current applications that are available, lesson objectives, and more. It is fully configurable by the teacher with three options to choose from: visible, hidden, and auto hide.



Testing and assessments

Student surveys

Determine if students understood a lesson with an instant survey. Choose from pre-supplied or custom responses, instantly view all responses and a class summary, publish survey results to the class, and even create dynamic groups based on student responses.

Student testing

Design multimodal examinations, track student responses, and share feedback immediately. Test Design can be installed on a standalone system, too.

- **Create exams:** create a library of resources and questions and quickly create exams from them; easily share libraries with others; choose from eight different question styles; feature two to four answer options per question
- **Track results:** set examination grade levels ahead of time (e.g., 80% = A grade); track student progress in real-time, even by question; auto-grade tests so results are available immediately
- **Deliver results:** share individual results with each student; deliver overall results to the classroom; highlight correct answers

Question and Answer (Q&A) module

The Q&A module is a powerful addition to HP Classroom Manager 3.0, helping teachers reinforce key points and instantly assess student understanding during a lesson. Teachers can verbally ask questions to the class which they answer on their devices, as well as award points to individuals and/or teams. Features include:

- **First to answer:** teacher can search a list of top responders in a class and choose to send a question to one student for testing; once they receive the answer they can confirm if it is correct and whether they should send the question to additional students
- **Enter an answer:** teacher can enter answers to questions in advance, so when students complete their questions the results are instantly displayed
- **Potluck and team modes:** choose a student to answer a question at random, or assign students to teams and have them answer together
- **Peer assessment:** allows students to decide if another student's answer was correct/incorrect and displays the results on the teacher's screen

Learning materials

Student journal

At the end of a lesson, the student journal can gather all the relevant items from that lesson and combine them automatically in a PDF file for the student to review later—or add them to an existing master journal. Student journals can include:

- **Teacher content:** lesson details and objectives; teacher notes; presentation screenshots and related explanations; virtual whiteboard screens
- **Student content:** individual test results; class notes; copies of class chat transcripts; content from days a student was absent
- **Supplemental content:** URLs of websites used in lesson; chapters and bookmarks



Features and benefits for IT administrators¹

Tech console

HP Classroom Manager 3.0 provides a comprehensive Tech Console specifically designed for lab technicians and network managers—helping to ensure all computers are easy to manage, easy to maintain, and are readily available.

Monitor devices and network

Real-time data makes it easy to see how devices are performing across the network from a single view, including application and internet use, USB memory stick status, control services, processes, and applications. Administrators can view information for one or all PCs.

Transfer files and folders

Quickly transfer files and folders to one, multiple, or all of the computers on a network.

Organize network information

HP Classroom Manager 3.0 makes it easy to organize and search devices, including:

- Group by classroom or physical location
- Display students and teachers by active class
- Search for students by name, device, or class
- Resize remote machine thumbnails

Live assistance

Provide direct technical assistance to any teacher or student with powerful remote features, including:

- Chat with one or multiple students or teachers
- Broadcast messages to a group or to all network users
- 1:1 PC control
- Automatically connect to students and teachers with room mode
- Generate a full hardware and software inventory of a selected PC, including hotfixes

Manage devices and network

Perform a range of complicated tasks remotely, including:

- Remove individual client security settings
- Power on/off, reboot, and login to classroom computers
- View and set power management, Windows update, and security settings
- Edit the registry of a remote system
- Launch a local command prompt from the remote system on your PC
- Apply a school-wide set of internet and application restrictions

Security

HP Classroom Manager 3.0 includes a host of security features to ensure it is used correctly, plus Active Directory templates for easy implementation. Features include:

- Unique security keys, so no one else can use your copy
- Restrict connectivity to systems carrying a matching software license
- Teacher profiles, to allow for customized levels of functionality
- Use AD profiles to limit which users can use teacher/tech tools
- Use AD profiles to force configurations for teacher and client
- Control access to and use of portable media devices within classroom
- Automatically re-apply restrictions on reboot



What schools are saying about HP Classroom Manager

“HPCM is a simple and cost-effective way of optimizing how we use computers in a learning context... It provides an intuitive, interactive platform for students and teachers alike.”

– Johan Nyberg, head teacher, Roslagsskolan

“In the past, teachers at Palmer School had a difficult time explaining an assignment. Now we have the ability to show students our teacher desktop and go through each step visually and orally as the students follow along. This is tremendously helpful in a classroom of students with a variety of learning styles. HP Classroom Manager is such a huge improvement to our previous setup. And I am fairly sure we have only scratched the surface with all the features.”

– Laurie Fahy, Palmer School

“It allows us to see, in parallel, how the students are solving a given task. If a student is performing the task well it can be used as an example or as a guide for the other students. In case a student complains about the task being difficult, the teacher can prove that the task can be performed by showing that other students are solving the problem by themselves. So, it’s not the teacher telling how to solve the task. The students are motivated to solve the task because they see other students are able to do it.”

– Edgar de León, Computer Science teacher, Instituto Justo Arosemena

“There are some introverted students in my class who do not often take the initiative to interact with teachers or answer questions. With HP Classroom Manager, teachers can instruct students according to their specific study preferences. Some students grow more comfortable with these new ways of interaction and are [now] pleased to communicate with teachers.”

– Dong Yi, teacher, Shanghai, China



What's new in version 3.0?

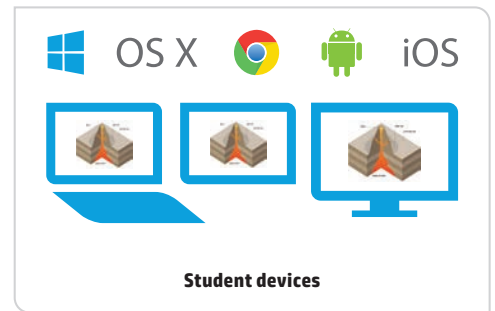
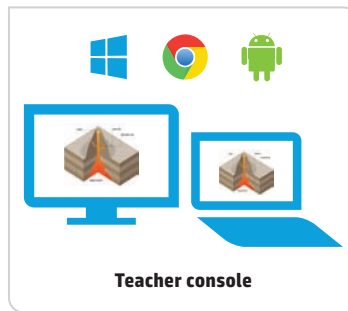
- Optimized for Windows 10 touch-enabled devices
- Enhanced Windows 8/8.1 touch screen support
- Automatically optimizes wireless performance
- Automatically launch HP Classroom Manager at startup and sign in to a specific room
- And more

New Windows 10 teacher app

The Windows 10 teacher app was specifically designed for installation on Windows tablets and touch-enabled devices, and is provided in addition to the desktop teacher application for Windows. The app offers a more streamlined interface—focused on simplicity and ease of use—with quick access to many of HP Classroom Manager's core features.

Available for free download from the Windows Store.

¹ Available features vary by operating platform.



Platforms supported

- Microsoft Windows®
- Apple OS X® (through Chrome browser)
- Google Chrome OS™
- iOS
- Android™

System requirements

- Requires Windows 2008, Windows 7, Windows 8/8.1, Windows 8.1 Emerging Markets, Windows 8.1 Pro, or Windows 10
- Operates in Terminal Server, Thin/Zero Client, Virtual Desktop, and share-resource computing environments

© Copyright 2016 HP Development Company, L.P. The information contained herein is subject to change without notice. The only warranties for HP products and services are set forth in the express warranty statements accompanying such products and services. Nothing herein should be construed as constituting an additional warranty. HP shall not be liable for technical or editorial errors or omissions contained herein.

Android, the Android logo, Chrome, the Chrome logo, Chrome OS operating system, and Google are trademarks or registered trademarks of Google Inc. OS X, Mac, and iPad are trademarks or registered trademarks of Apple, Inc. iOS is a trademark or registered trademark of Cisco in the U.S. and other countries and is used under license. Microsoft and Windows are trademarks or registered trademarks of Microsoft Corporation in the U.S. and other countries.

4AA6-3528ENW, January 2016



Share with colleagues



Rate this document

