

**DELL**Technologies



NDA Required  
until 1/6/25



# Scalable performance in a sleek design

Dell Pro 13/14/16 Plus

Featuring Intel® Core™ Ultra processors (Series 2)

PB13250  
PB14250  
PB16250

**Connection**<sup>®</sup>  
we solve IT<sup>®</sup>

**World's most scalable mainstream business laptops<sup>1</sup>**

Dell Pro Plus features a variety of configurations to fit the needs of your workforce - all with the same system BIOS for simplified management and deployment.

**Optional 2-in-1 form factor**

Available on the 13" and 14", a 2-in-1 form factor allows you to select from four different modes - laptop, tablet, tent, or stand - for the flexibility to work in the way that best suits your needs.

**Stay connected**

Get more done with faster, more reliable connectivity with a WiFi 7 capable wireless card.<sup>3</sup> Access the Internet wherever you work with optional mobile broadband<sup>4</sup> cards from 5G to 4G LTE.

**Configurable memory**

Experience quick response times and improved performance with either LPDDR5x memory up to 32GB or DDR5 memory up to 64GB.

**Smallest new 13" and 16" mainstream commercial notebooks<sup>1</sup>**

Crafted from 50% recycled aluminum, these mobile and space-saving designs are both durable and sleek.

**Whisper-quiet performance**

Designed with an improved thermal solution that is up to 30% quieter than the previous generation<sup>2</sup> for the performance you need, wherever you work, without added fan noise.

**Commercial-grade durability**

Built to travel with you, our laptops undergo rigorous MIL-STD H testing to ensure reliability for your fleet.

**Intel® Core™ Ultra processors (Series 2)**

Harness powerful on-device AI and outstanding performance and power efficiency with this AI PC, featuring Copilot+ PC experiences.

**Exceptional battery life**

Easily work from anywhere without being tethered to an outlet.

**Dell Pro AI Studio**

With the industry's most comprehensive AI toolkit, Dell leverages advanced NPU technology to deliver exceptional capabilities for transforming your business operations.<sup>5</sup>

**Simplify IT**

Dell offers the world's most secure and manageable commercial PCs<sup>6</sup>, along with modern lifecycle services and solutions to make IT management a breeze.

**Breakthrough innovation in sustainable PC design:**

- World's first commercial PC built with a modular USB-C port that is up to 4 times more durable and enables easier repairs.<sup>7</sup>
- Designed with a wide variety of innovative materials like recycled and low emissions aluminum, recycled ocean-bound plastic, bio-based plastic, post-consumer recycled plastic and battery technology now designed with 80% less cobalt.<sup>8</sup>

**Clear conferencing**

Unleash your best self, even in challenging lighting conditions, with up to a 5MP IR camera featuring HDR technology.

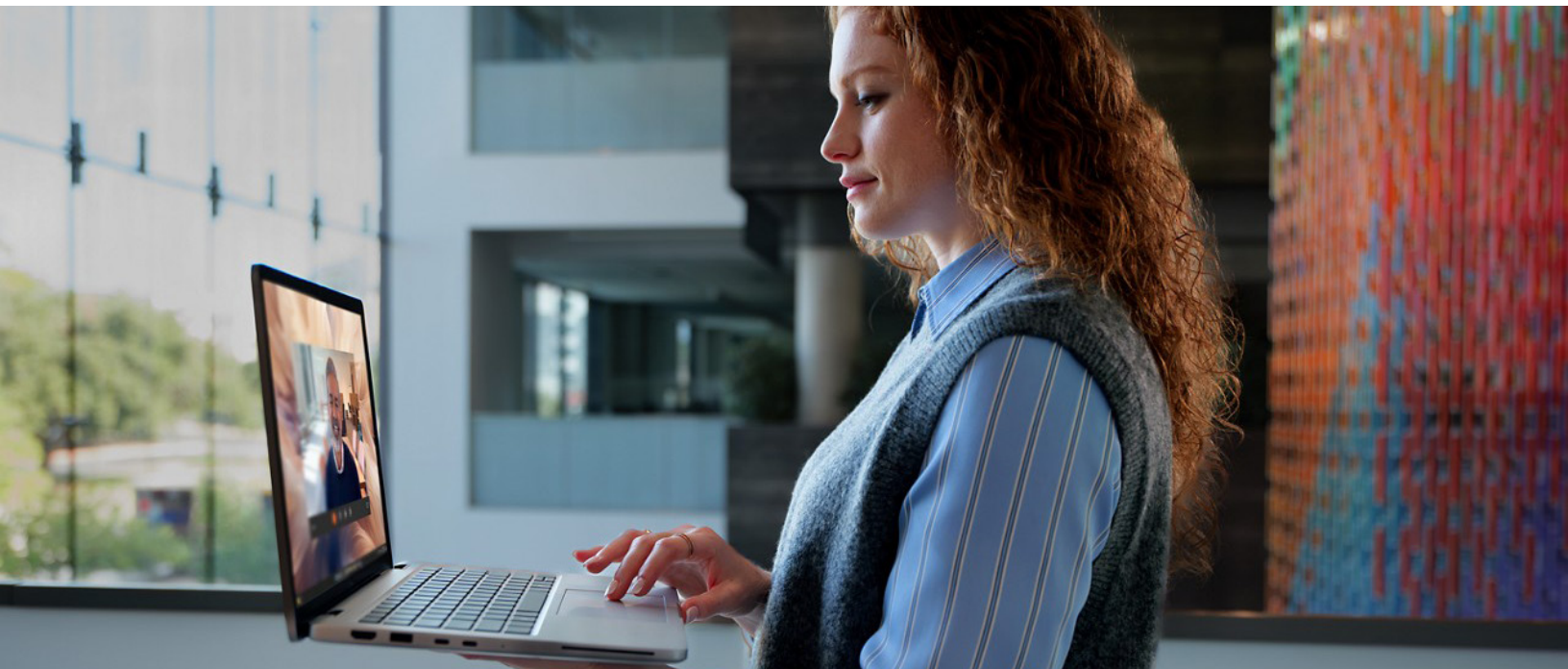
**See it all**

Enjoy more room for productivity with sleek, narrow borders on a spacious 16:10 aspect ratio display with 5% more screen space than a 16:9 aspect ratio.

**Nimble navigation**

Thoughtfully crafted for professional workforces with a roomy touchpad and palm rest for ample space to quickly navigate through tasks.





# Accelerate your workflow with AI

Next-level productivity, collaboration and creativity with innovative software applications on the #1 in commercial AI PCs worldwide.<sup>1</sup>



McAfee Deepfake Detector sends real-time alerts to identify misleading AI content - protecting your brand and maintaining trust while saving up to 48% less power on select Dell Pro Notebooks with Intel® Core™ Ultra 200V series processors.<sup>2</sup>



Tap into AI-driven insights to improve your operations and ROI by proactively identifying IT issues, reducing help desk tickets through anomaly detection, and simplifying troubleshooting with an intelligent virtual assistant.



Solve problems faster and drive business impact with Windows 11 Pro Copilot+ PCs.<sup>3</sup> Devices come with a turbocharged NPU for powerful performance and unique AI experiences that save time and accelerate innovation.



Cyberlink provides a suite of photo and video editing tools that bring advanced features to everyday users. Don't disrupt your creative workflow—enjoy up to 2.5x longer battery life on select Dell Pro Notebooks with AI-powered video editing in CyberLink PowerDirector, fueled by Intel® Core™ Ultra 200V processors and NPU acceleration.<sup>4</sup>



# Sustainable innovation



## Built with sustainable materials

Designed with innovative materials like recycled and low emissions aluminum in the top cover and palmrest, up to 50% post-consumer recycled plastic in the inner frame of top and bottom covers and speaker housing and 98% post-consumer recycled plastic in the battery frame, 46% bio-based rubber bumpers, 28% recycled ocean-bound plastic in the fan housing and 10% recycled glass in the panel.<sup>1</sup>

Extending Dell's leadership in recycled cobalt, and based on the chosen configuration, Dell Pro Plus notebooks may ship with batteries made with 80% less cobalt or 50% recycled cobalt.<sup>2</sup>



## Packaging with purpose

Ships in packaging with 100% recycled or renewable materials<sup>5</sup> with multipack options for easier unboxing and reduced transportation and packaging waste.<sup>6</sup>



## Leading design for PC longevity

This laptop is designed with a modular main board and I/O board for easier access to help reduce e-waste.<sup>3</sup> World's first commercial PC built with a modular USB-C port secured by screws, improving durability by up to 4 times and enabling easier repairs.<sup>4</sup>

Dell also makes it easy to access and replace parts to get the most life out of our products.



## Seamlessly transition from old to new technology

We can help you responsibly and securely retire your legacy IT equipment, regardless of brand, while addressing your sustainability goals.





# Up-level your PC experience with Dell Displays and Accessories

Fuel productivity and collaboration with a complete Dell ecosystem that is designed and tested to work *Better Together* with your Dell Pro Plus laptop.



A



B



C

A Dell Pro 27 Plus Video Conferencing Monitor - P2724DEB

B Dell Pro 7-in-1 USB-C Travel Hub - DA310

C Dell Pro Plus Keyboard and Mouse - KM7321W



D



E



F

D Dell Pro Plus Wireless ANC Headset - WL5024

E Dell Pro 14-16 Plus EcoLoop Slim Backpack - CP5724S

F Dell Pro Thunderbolt 4 Smart Dock - SD25TB4



### Dell Display and Peripheral Manager

Manage and optimize the experience of your Dell displays, docks and accessories ecosystem with one simple application.

# Simplify IT

Our most secure<sup>1</sup> and most manageable<sup>4</sup> offerings make IT management a breeze

**World's Most Secure Commercial PCs<sup>1</sup>**

According to Principled Technologies, no PC manufacturer offers the BIOS-level visibility Dell does.

A Principled Technologies report, in-depth research. Real world value.

**A comparison of security features in Dell, HP, and Lenovo PC systems**

**Approach**

Dell™ commissioned Principled Technologies to investigate 10 security features in the PC security and system management space:

- Support for monitoring solutions
- BIOS security and protection features
  - Platform integrity validation
  - Device integrity validation via off-site measurements
  - Component integrity validation for Intel® Management Engine (ME) via off-site measurements
- BIOS image capture for analysis
- Built-in hardware cache for monitoring BIOS changes with security information and event management (SEM) integration
- Microsoft Intune management
  - BIOS setting management integrations for Intune
  - BIOS access management security enhancements for Intune

## SECURITY

Improve fleet-wide security with multiple layers of defense.

Reduce the attack surface and enhance long-term cyber resilience with **Dell Trusted Workspace**



Be secure from first boot with rigorous supply chain controls.



Maintain BIOS integrity with deep, firmware-level visibility.



Protect end-user identity from malware that looks to steal credentials.



Enrich OS-level data with PC telemetry to speed detection, response and remediation.



Layer on advanced threat protection from our ecosystem of best-of-breed software partners.

## MANAGEABILITY

Manage your fleet of PCs - reliably and easily

Help secure and optimize your endpoints and deliver end-user productivity with **Dell Manageability Solutions**

With **Dell Management Portal**, you can manage Dell PCs, over the cloud, in conjunction with Microsoft Intune.

Update and secure your fleet of Dell PCs, with one application – **Dell Client Device Manager**.<sup>5</sup>

**Dell Trusted Update Experience** makes it simple to update endpoints with the latest BIOS and driver versions. Dell is the only Top-5 PC vendor that:



**Publishes<sup>2</sup> a device drivers and downloads release schedule:**

IT Admins can deploy fleet-wide device updates on a predictable timeline.



**Performs<sup>3</sup> integrated validation of all driver and BIOS modules in an update:**

IT Admins can expect a trusted, system compatible update deployment, across a fleet of devices.




**Dell has the industry's first:<sup>4</sup>**

Partner Portal accessible in Microsoft Intune, with fleet-wide BIOS password access capability and Enterprise application access and publication capabilities

Binary Large Object (BLOB) package-based solution, for endpoint BIOS settings configuration, using Microsoft Intune

Hardware OEM systems management solution to integrate with Intel vPro





**Shrink the IT-security gap with an integrated, AI-enabled solution**

Explore hardware-assisted security with Dell, Intel & CrowdStrike.

# Legacy, scale and innovation

Dell Technologies is your trusted partner for the future of work

## Dell Technologies APEX

# 1st

### and most comprehensive<sup>1</sup>

As-a-service portfolio that spans from multi-cloud to client devices. Experience the flexibility to transform your IT and deploy the latest technologies at predictable costs.

### Dell APEX PC-as-a-Service

Fully customizable monthly subscription that can include PCs, peripherals, software and services with no upfront investment.

## Dell Services

Reduce complexity of technology deployment and management with offerings designed to work for you

## ProDeploy Client Suite for PCs

# 30K+

### PC's configured daily<sup>3</sup>

For organizations of any size, find the right-sized deployment solution to solve an array of IT needs.

35 years of deployment expertise from Dell ensures seamless experiences for configuration, imaging, and provisioning; as well as asset tagging and warehousing.



Modern  
Lifecycle  
Solutions

## Asset Recovery Services

# 2.8B

### Pounds of electronics recovered through all recovery programs since 2007<sup>2</sup>

Let Dell help you securely and responsibly retire your old IT equipment - regardless of brand - to allow for a seamless transition from old to new technology, while protecting both your business and the planet.

## Dell Premier

# 324%

### ROI over 3 years<sup>5</sup>

Modernize IT purchasing by shopping your catalog in a tailored online solution. Gain control over the entire IT ecosystem to cut costs, standardize ordering, access analytics and more.

## ProSupport Suite for PCs

# 641

### Hours of admin time saved per year<sup>4</sup>

With advanced telemetry and AI, IT teams can remotely manage the health of their Dell fleet, anticipate and resolve issues and automate PC updates.



Not All Technical Specifications Available Per System Configuration.

[Please search Dell.com/support](https://www.dell.com/support) for product owner's manual or contact your Dell Technologies sales expert.

FEATURE	TECHNICAL SPECIFICATION	TECHNICAL SPECIFICATION	TECHNICAL SPECIFICATION
<b>MODEL NUMBER</b>	Dell Pro 13 Plus PB13250	Dell Pro 14 Plus PB14250	Dell Pro 16 Plus PB16250
<b>CHASSIS MATERIAL &amp; COLOR</b>	Aluminum Chassis in Platinum Silver color	Aluminum Chassis in Platinum Silver color	Aluminum Chassis in Platinum Silver color
<b>PROCESSOR ARCHITECTURE</b>	Intel® Core™ Ultra Series 2 (V) Intel® Core™ Ultra Series 2 (U) - Coming Soon	Intel® Core™ Ultra Series 2 (V) Intel® Core™ Ultra Series 2 (U) - Coming Soon	Intel® Core™ Ultra Series 2 (V) Intel® Core™ Ultra Series 2 (U) - Coming Soon
<b>PROCESSOR OPTIONS<sup>1,2</sup></b>	<p><b>Intel® Core™ Ultra Series 2 (V)</b> Intel® Core™ Ultra 5 226V, includes 16GB LPDDR5x memory Intel® Core™ Ultra 5 236V vPro®, includes 16GB LPDDR5x memory Intel® Core™ Ultra 5 238V vPro®, includes 32GB LPDDR5x memory Intel® Core™ Ultra 7 266V vPro®, includes 16GB LPDDR5x memory Intel® Core™ Ultra 7 268V vPro®, includes 32GB LPDDR5x</p> <p><b>Intel® Core™ Ultra Series 2 (U) - Coming Soon</b> Intel® Core™ Ultra 5 225U Intel® Core™ Ultra 5 235U vPro® Intel® Core™ Ultra 7 255U Intel® Core™ Ultra 7 265U vPro®</p>	<p><b>Intel® Core™ Ultra Series 2 (V)</b> Intel® Core™ Ultra 5 226V, includes 16GB LPDDR5x memory Intel® Core™ Ultra 5 236V vPro®, includes 16GB LPDDR5x memory Intel® Core™ Ultra 5 238V vPro®, includes 32GB LPDDR5x memory Intel® Core™ Ultra 7 266V vPro®, includes 16GB LPDDR5x memory Intel® Core™ Ultra 7 268V vPro®, includes 32GB LPDDR5x memory</p> <p><b>Intel® Core™ Ultra Series 2 (U) - Coming Soon</b> Intel® Core™ Ultra 5 225U Intel® Core™ Ultra 5 235U vPro® Intel® Core™ Ultra 7 255U Intel® Core™ Ultra 7 265U vPro®</p>	<p><b>Intel® Core™ Ultra Series 2 (V)</b> Intel® Core™ Ultra 5 226V, includes 16GB LPDDR5x memory Intel® Core™ Ultra 5 236V vPro®, includes 16GB LPDDR5x memory Intel® Core™ Ultra 5 238V vPro®, includes 32GB LPDDR5x memory Intel® Core™ Ultra 7 266V vPro®, includes 16GB LPDDR5x memory Intel® Core™ Ultra 7 268V vPro®, includes 32GB LPDDR5x memory</p> <p><b>Intel® Core™ Ultra Series 2 (U) - Coming Soon</b> Intel® Core™ Ultra 5 225U Intel® Core™ Ultra 5 235U vPro® Intel® Core™ Ultra 7 255U Intel® Core™ Ultra 7 265U vPro®</p>
<b>GRAPHICS<sup>1,3</sup></b>	<p><b>Intel® Core™ Ultra Series 2 (V)</b> Intel® Arc™ graphics - 130V with Intel® Core™ Ultra 5 Series 2 (V) Intel® Arc™ graphics - 140V with Intel® Core™ Ultra 7 Series 2 (V)</p> <p><b>Intel® Core™ Ultra Series 2 (U) - Coming Soon</b> Intel® graphics</p>	<p><b>Intel® Core™ Ultra Series 2 (V)</b> Intel® Arc™ graphics - 130V with Intel® Core™ Ultra 5 Series 2 (V) Intel® Arc™ graphics - 140V with Intel® Core™ Ultra 7 Series 2 (V)</p> <p><b>Intel® Core™ Ultra Series 2 (U) - Coming Soon</b> Intel® graphics</p>	<p><b>Intel® Core™ Ultra Series 2 (V)</b> Intel® Arc™ graphics - 130V with Intel® Core™ Ultra 5 Series 2 (V) Intel® Arc™ graphics - 140V with Intel® Core™ Ultra 7 Series 2 (V)</p> <p><b>Intel® Core™ Ultra Series 2 (U) - Coming Soon</b> Intel® graphics</p>
<b>MEMORY OPTIONS<sup>1,2</sup></b>	<p><b>Intel® Core™ Ultra Series 2 (V)</b> 16GB LPDDR5X, 8533 MT/s (Memory on package) 32GB LPDDR5X, 8533 MT/s (Memory on package)</p> <p><b>Intel® Core™ Ultra Series 2 (U) - Coming Soon</b> 8GB DDR5, 5600 MT/s, single-channel 16GB DDR5, 5600 MT/s, single or dual-channel 32GB DDR5, 5600 MT/s, single or dual-channel 64GB DDR5, 5600 MT/s, dual-channel</p>	<p><b>Intel® Core™ Ultra Series 2 (V)</b> 16GB LPDDR5X, 8533 MT/s (Memory on package) 32GB LPDDR5X, 8533 MT/s (Memory on package)</p> <p><b>Intel® Core™ Ultra Series 2 (U) - Coming Soon</b> 8GB DDR5, 5600 MT/s, single-channel 16GB DDR5, 5600 MT/s, single or dual-channel 32GB DDR5, 5600 MT/s, single or dual-channel 64GB DDR5, 5600 MT/s, dual-channel</p>	<p>16 GB: LPDDR5X, 8533 MT/s (Memory on package) 32 GB: LPDDR5X, 8533 MT/s (Memory on package)</p>
<b>STORAGE OPTIONS<sup>1,4</sup></b>	<p><b>M.2 2230</b> 256 GB, TLC, PCIe Gen 4 NVMe, SSD 512 GB, QLC, PCIe Gen 4 NVMe, SSD 512 GB, TLC, PCIe Gen 4 NVMe, SSD 1 TB, TLC, PCIe Gen 4 NVMe, SSD</p> <p><b>M.2 2280</b> 1 TB, TLC, PCIe Gen 4 NVMe, SSD, Self-Encrypting Opal 2.0 2 TB, TLC, PCIe Gen 4 NVMe, SSD, Self-Encrypting Opal 2.0</p>	<p><b>M.2 2230</b> 256 GB, TLC, PCIe Gen 4 NVMe, SSD 512 GB, QLC, PCIe Gen 4 NVMe, SSD 512 GB, TLC, PCIe Gen 4 NVMe, SSD 1 TB, TLC, PCIe Gen 4 NVMe, SSD</p> <p><b>M.2 2280</b> 1 TB, TLC, PCIe Gen 4 NVMe, SSD, Self-Encrypting Opal 2.0 2 TB, TLC, PCIe Gen 4 NVMe, SSD, Self-Encrypting Opal 2.0</p>	<p><b>M.2 2230</b> 256 GB, TLC, PCIe Gen 4 NVMe, SSD 512 GB, QLC, PCIe Gen 4 NVMe, SSD 512 GB, TLC, PCIe Gen 4 NVMe, SSD 1 TB, TLC, PCIe Gen 4 NVMe, SSD</p> <p><b>M.2 2280</b> 1 TB, TLC, PCIe Gen 4 NVMe, SSD, Self-Encrypting Opal 2.0 2 TB, TLC, PCIe Gen 4 NVMe, SSD, Self-Encrypting Opal 2.0</p>
<b>DISPLAY<sup>1</sup></b>	<p><b>Laptop</b> 13.3" 16:10 FHD+ (1920 x 1200), 60Hz, IPS, Non-Touch, Anti-Glare, 300 nit, 45% NTSC, 6-bit + FRC 13.3" 16:10 FHD+ (1920 x 1200), 60Hz, IPS, Touch (No cover glass), Anti-Glare, 300 nit, 100% sRGB, 6-bit + FRC, ComfortView Plus (Low Blue Light) 13.3" 16:10 FHD+ (1920 x 1200), 60Hz, IPS, Non-Touch, Anti-Glare, 400 nit, 100% sRGB, 8-bit, ComfortView Plus (Low Blue Light), Low Power</p> <p><b>2-in-1 (Intel® Core™ Ultra Series 2 (U) only - Coming Soon)</b> 13.3" 16:10 FHD+ (1920 x 1200), 60Hz, IPS, Touch, Anti-Reflective, Anti-Smudge, Gorilla Glass Victus, 300 nit, 100% sRGB, 6-bit + FRC, ComfortView Plus (Low Blue Light), Active Pen Support (AES)</p>	<p><b>Laptop</b> 14" 16:10 FHD+ (1920 x 1200), 60Hz, IPS, Non-touch, Anti Glare, 300 nit, 45% NTSC, 6-bit + FRC 14" 16:10 FHD+ (1920 x 1200), 60Hz, IPS, Touch (No cover glass), Anti-Glare, 300 nit, 100% sRGB, 6-bit + FRC 14" 16:10 FHD+ (1920 x 1200), 60Hz, IPS, Non-Touch, Anti-Glare, 400 nit, 100% sRGB, 8-bit, ComfortView Plus (Low Blue Light), Low Power 14" 16:10 QHD+ (2560 x 1600), 90Hz, IPS, Non-touch, Anti-Glare, 400 nit, 100% sRGB, 8-bit, ComfortView Plus (Low Blue Light)</p> <p><b>2-in-1</b> 14" 16:10 FHD+ (1920 x 1200), 60Hz, IPS, Touch, Anti-Reflective, Anti-Smudge, Gorilla Glass Victus, 300 nit, 100% sRGB, 6-bit + FRC, ComfortView Plus (Low Blue Light), Active Pen Support (AES)</p>	<p><b>Laptop</b> 16" 16:10 FHD+ (1920 x 1200), 60Hz, IPS, Non-Touch, Anti-Glare, 300 nit, 45% NTSC, 6-bit + FRC 16" 16:10 FHD+ (1920 x 1200), 60Hz, IPS, Touch (No cover glass), Anti-Glare, 300 nit, 45% NTSC, 6-bit + FRC 16" 16:10 QHD+ (2560 x 1600), 120Hz, IPS, Non-touch, Anti-Glare, 300 nit, 100% sRGB, 8-bit + FRC, ComfortView Plus (Low Blue Light)</p>
<b>CONNECTIVITY OPTIONS<sup>1</sup></b>	<p><b>Modern Standby Microsoft Compliant</b></p> <p><b>Wireless LAN Options<sup>5</sup></b> Intel® BE201 Wi-Fi 7 2x2, BT 5.4 Wireless Card Intel® AX211 Wi-Fi 6E 2x2, BT 5.3 Wireless Card – Intel® Core™ Ultra Series 2 (U) only</p> <p><b>Mobile Broadband Options<sup>5</sup></b> 5G – Mediatek® T700 (DW5933e), eSIM capable (Laptop only) 4G CAT12 - Qualcomm® Snapdragon™ X12 Global LTE-Advanced (DW5826e), eSIM capable – Intel® Core™ Ultra Series 2 (U) only</p>	<p><b>Modern Standby Microsoft Compliant</b></p> <p><b>Wireless LAN Options<sup>5</sup></b> Intel® BE201 Wi-Fi 7 2x2, BT 5.4 Wireless Card Intel® AX211 Wi-Fi 6E 2x2, BT 5.3 Wireless Card – Intel® Core™ Ultra Series 2 (U) only</p> <p><b>Mobile Broadband Options<sup>5</sup></b> 5G – Qualcomm® Snapdragon™ X72 Global 5G (DW5934e), eSIM capable (Laptop only) 4G CAT12 - Qualcomm® Snapdragon™ X12 Global LTE-Advanced (DW5826e), eSIM capable – Intel® Core™ Ultra Series 2 (U) only</p>	<p><b>Modern Standby Microsoft Compliant</b></p> <p><b>Wireless LAN Options<sup>5</sup></b> Intel® BE201 Wi-Fi 7 2x2, BT 5.4 Wireless Card Intel® AX211 Wi-Fi 6E 2x2, BT 5.3 Wireless Card – Intel® Core™ Ultra Series 2 (U) only</p> <p><b>Mobile Broadband Options<sup>5</sup></b> 5G – Mediatek® T700 (DW5933e), eSIM capable (Laptop only) 4G CAT12 - Qualcomm® Snapdragon™ X12 Global LTE-Advanced (DW5826e), eSIM capable – Intel® Core™ Ultra Series 2 (U) only</p>



FEATURE	TECHNICAL SPECIFICATION	TECHNICAL SPECIFICATION	TECHNICAL SPECIFICATION
<b>MODEL NUMBER</b>	Dell Pro 13 Plus PB13250	Dell Pro 14 Plus PB14250	Dell Pro 16 Plus PB16250
<b>CAMERA OPTIONS<sup>1</sup></b>	FHD HDR Camera, 1080p HDR video, Temporal Noise Reduction, Camera Shutter FHD + IR HDR Camera, 1080p HDR video, Temporal Noise Reduction, Camera Shutter 5MP + IR HDR MIPI Camera, 1440p HDR video, Temporal Noise Reduction, Camera Shutter, Presence Detection	FHD HDR Camera, 1080p HDR video, Temporal Noise Reduction, Camera Shutter FHD + IR HDR Camera, 1080p HDR video, Temporal Noise Reduction, Camera Shutter 5MP + IR HDR MIPI Camera, 1440p HDR video, Temporal Noise Reduction, Camera Shutter, Presence Detection	FHD HDR Camera, 1080p HDR video, Temporal Noise Reduction, Camera Shutter FHD + IR HDR Camera, 1080p HDR video, Temporal Noise Reduction, Camera Shutter 5MP + IR HDR MIPI Camera, 1440p HDR video, Temporal Noise Reduction, Camera Shutter, Presence Detection
<b>AUDIO &amp; SPEAKERS<sup>1</sup></b>	2 x 2W Speakers, Cirrus Logic audio output processing	2 x 2W Speakers, Cirrus Logic audio output processing	2 x 2W Speakers, Cirrus Logic audio output processing
<b>MICROPHONE<sup>1</sup></b>	2 x Noise Canceling Microphones	2 x Noise Canceling Microphones	2 x Noise Canceling Microphones
<b>SECURITY<sup>1</sup></b>	<b>Standard Security Features</b> TPM 2.0 FIPS-140-2 Certified / TCG Certified Chassis intrusion switch - Remotely detects hardware tampering and is integrated with Dell SafeBIOS Indicators of Attack. Camera Shutter Security Lock Slot  <b>Optional Security Features</b> Fingerprint Reader (in Power Button) with ControlVault 3+ Advanced Authentication with FIPS 140-3 Level 3 Certification and Windows Hello compliance FHD IR Camera with Windows Hello compliance 5MP IR MIPI Camera with Windows Hello compliance and Presence detection Contacted Smart Card reader with ControlVault 3+ Advanced Authentication with FIPS 140-3 Level 3 Certification Contactless (NFC) Smart Card reader with ControlVault 3+ Advanced Authentication with FIPS 140-3 Level 3 Certification	<b>Standard Security Features</b> TPM 2.0 FIPS-140-2 Certified / TCG Certified Chassis intrusion switch - Remotely detects hardware tampering and is integrated with Dell SafeBIOS Indicators of Attack. Camera Shutter Security Lock Slot  <b>Optional Security Features</b> Fingerprint Reader (in Power Button) with ControlVault 3+ Advanced Authentication with FIPS 140-3 Level 3 Certification and Windows Hello compliance FHD IR Camera with Windows Hello compliance 5MP IR MIPI Camera with Windows Hello compliance and Presence detection Contacted Smart Card reader with ControlVault 3+ Advanced Authentication with FIPS 140-3 Level 3 Certification Contactless (NFC) Smart Card reader with ControlVault 3+ Advanced Authentication with FIPS 140-3 Level 3 Certification	<b>Standard Security Features</b> TPM 2.0 FIPS-140-2 Certified / TCG Certified Chassis intrusion switch - Remotely detects hardware tampering and is integrated with Dell SafeBIOS Indicators of Attack. Camera Shutter Security Lock Slot  <b>Optional Security Features</b> Fingerprint Reader (in Power Button) with ControlVault 3+ Advanced Authentication with FIPS 140-3 Level 3 Certification and Windows Hello compliance FHD IR Camera with Windows Hello compliance 5MP IR MIPI Camera with Windows Hello compliance and Presence detection Contacted Smart Card reader with ControlVault 3+ Advanced Authentication with FIPS 140-3 Level 3 Certification Contactless (NFC) Smart Card reader with ControlVault 3+ Advanced Authentication with FIPS 201-certified Fingerprint Reader (on Palmrest)
<b>PORTS, SLOTS &amp; CHASSIS<sup>1</sup></b>	2 x USB Type-C Thunderbolt™ 4.0 with Power Delivery 3.1 & Display Port 2.1 2 x USB 3.2 Gen 1 Type-A (1x with Power share) 1 x HDMI 2.1 1 x Optional external nano SIM card tray (WWAN only) 1 x Optional Contacted Smart Card Reader 1 x Optional Touch Fingerprint Reader in Power Button 1 x Global Headset jack 1 x Wedge Shaped Lock Slot	2 x USB Type-C Thunderbolt™ 4.0 with Power Delivery 3.1 & DisplayPort 2.1 2 x USB 3.2 Gen 1 Type-A (1x with Power share) 1 x HDMI 2.1 1 x Optional external nano SIM card tray (WWAN only) 1 x Optional Contacted Smart Card Reader 1 x Optional Touch Fingerprint Reader in Power Button 1 x Global Headset jack 1 x Wedge Shaped Lock Slot 1 x RJ45 (Intel® Core™ Ultra Series 2 (U) only)	2 x USB Type-C Thunderbolt™ 4.0 with Power Delivery 3.1 & DisplayPort 2.1 2 x USB 3.2 Gen 1 Type-A (1x with Power share) 1 x HDMI 2.1 1 x Optional external nano SIM card tray (WWAN only) 1 x Optional Contacted Smart Card Reader 1 x Optional Touch Fingerprint Reader in Power Button 1 x Global Headset jack 1 x Wedge Shaped Lock Slot 1 x RJ45 (Intel® Core™ Ultra Series 2 (U) only)
<b>TOUCHPAD</b>	Precision Clickpad with multi-touch gesture support	Precision Clickpad with multi-touch gesture support	Precision Clickpad with multi-touch gesture support
<b>INPUT<sup>1</sup></b>	Optional 10-Finger Touch Display Spill Resistant Non-Backlit AI Hotkey Keyboard Spill Resistant Backlit AI Hotkey Keyboard Dell Active Pen - PN5122W (optional, sold separately, 2-in-1 only) Dell Premier Rechargeable Active Pen - PN7522W (optional, sold separately, 2-in-1 only)	Optional 10-Finger Touch Display Spill Resistant Non-Backlit AI Hotkey Keyboard Spill Resistant Backlit AI Hotkey Keyboard Dell Active Pen - PN5122W (optional, sold separately, 2-in-1 only) Dell Premier Rechargeable Active Pen - PN7522W (optional, sold separately, 2-in-1 only)	Optional 10-Finger Touch Display Spill Resistant Non-Backlit AI Hotkey Keyboard Spill Resistant Backlit AI Hotkey Keyboard
<b>SENSORS<sup>1</sup></b>	Lid Close Sensor (Hall Effect Sensor) Accelerometer with support for Adaptive Thermals Optional Ambient Light Sensor with 5MP MIPI camera for Windows Auto Brightness Optional GPS (via WWAN card only) Magnetometer (2-in-1 only) Gyroscope (2-in-1 and Intelligence Privacy Camera only) Near Field Proximity Sensory for SAR compliance (2-in-1 with WWAN only)	Lid Close Sensor (Hall Effect Sensor) Accelerometer with support for Adaptive Thermals Optional Ambient Light Sensor with 5MP MIPI camera for Windows Auto Brightness Optional GPS (via WWAN card only) Magnetometer (2-in-1 only) Gyroscope (2-in-1 and Intelligence Privacy Camera only) Near Field Proximity Sensory for SAR compliance (2-in-1 with WWAN only)	Lid Close Sensor (Hall Effect Sensor) Accelerometer with support for Adaptive Thermals Optional Ambient Light Sensor with 5MP MIPI camera for Windows Auto Brightness Optional GPS (via WWAN card only)
<b>BATTERY OPTIONS<sup>1,7,8</sup></b>	3 cell 45 Wh, Li-ion, ExpressCharge 1.0™, ExpressCharge Boost™ 3 cell 45 Wh, Li-ion, ExpressCharge 1.0™, ExpressCharge Boost™, Long Life Cycle, 3-year limited hardware warranty 3 cell 55 Wh, Li-ion, ExpressCharge 1.0™, ExpressCharge Boost™ 3 cell 55 Wh, Li-ion, ExpressCharge 1.0™, ExpressCharge Boost™, Long Life Cycle, 3-year limited hardware warranty	3 cell 45 Wh, Li-ion, ExpressCharge 1.0™, ExpressCharge Boost™ 3 cell 45 Wh, Li-ion, ExpressCharge 1.0™, ExpressCharge Boost™, Long Life Cycle, 3-year limited hardware warranty 3 cell 55 Wh, Li-ion, ExpressCharge 1.0™, ExpressCharge Boost™ 3 cell 55 Wh, Li-ion, ExpressCharge 1.0™, ExpressCharge Boost™, Long Life Cycle, 3-year limited hardware warranty	3 cell 45 Wh, Li-ion, ExpressCharge 1.0™, ExpressCharge Boost™ 3 cell 45 Wh, Li-ion, ExpressCharge 1.0™, ExpressCharge Boost™, Long Life Cycle, 3-year limited hardware warranty 3 cell 55 Wh, Li-ion, ExpressCharge 1.0™, ExpressCharge Boost™ 3 cell 55 Wh, Li-ion, ExpressCharge 1.0™, ExpressCharge Boost™, Long Life Cycle, 3-year limited hardware warranty
<b>POWER OPTIONS<sup>1</sup></b>	60W Ultralight Mini adapter, Type-C 60W Ultralight Mini adapter, Type-C, 2-pin (Japan only) 65W adapter, Type-C 100W adapter, Type-C	60W Ultralight Mini adapter, Type-C 60W Ultralight Mini adapter, Type-C, 2-pin (Japan only) 65W adapter, Type-C 100W adapter, Type-C	60W Ultralight Mini adapter, Type-C 60W Ultralight Mini adapter, Type-C, 2-pin (Japan only) 65W adapter, Type-C 100W adapter, Type-C

FEATURE	TECHNICAL SPECIFICATION	TECHNICAL SPECIFICATION	TECHNICAL SPECIFICATION
<b>MODEL NUMBER</b>	Dell Pro 13 Plus PB13250	Dell Pro 14 Plus PB14250	Dell Pro 16 Plus PB16250
<b>OPERATING SYSTEM<sup>1</sup></b>	Microsoft® Windows 11 Home 64-bit Microsoft® Windows 11 Pro 64-bit Ubuntu®24.04 LTS, 64-bit (Laptop only)	Microsoft® Windows 11 Home 64-bit Microsoft® Windows 11 Pro 64-bit Ubuntu®24.04 LTS, 64-bit (Laptop only)	Microsoft® Windows 11 Home 64-bit Microsoft® Windows 11 Pro 64-bit Ubuntu®24.04 LTS, 64-bit
<b>DIMENSIONS &amp; WEIGHT<sup>1,9,10</sup></b>	Width: 11.8" / 300 mm Depth: 8.5" / 215 mm Height: starting from 0.79" / 19.95 mm Screen to Body ratio: 84.7% (laptop), 86.2% (2-in-1) Weight: starting from 2.71 lb / 1.23 kg	Width: 12.3" / 313.5 mm Depth: 8.8" / 224 mm Height: starting from 0.79" / 19.95 mm Screen to Body ratio: 86.9% (laptop), 88.8% (2-in-1) Weight: starting from 3.09 lb / 1.40 kg	Width: 14.1" / 358 mm Depth: 9.9" / 251 mm Height: 0.84" / 21.35 mm Screen to Body ratio: 87.9% Weight: starting from 4.06 lb / 1.84 kg
<b>WHAT'S IN THE BOX</b>	Dell Pro 13 Plus Power Adapter Power Cable Quick Start Guide	Dell Pro 14 Plus Power Adapter Power Cable Quick Start Guide	Dell Pro 16 Plus Power Adapter Power Cable Quick Start Guide

## Legal disclaimers

### Page 2

1. Based on Dell analysis of publicly available information, November 2024.
2. Based on Dell internal testing, November 2024. The claim applies for Dell Pro Plus configurations with Intel® Core™ Ultra 200U series processors or Intel® Core™ processors.
3. Wi-Fi7/6e which has the 6GHz band requires Windows 11 Operating system and compatible router. Router requires a separate purchase. WiFi 7/6E (6GHz) connectivity is only available in select locations. Check availability with your service provider. The Wi-Fi 7 card will operate on Wi-Fi 6E/6 speeds when Wi-Fi 7 is unavailable. Drivers for Wi-Fi 7 will be available mid-2024 (Win11 24H2 update). Dates are subject to change without notice. Ubuntu OS will not support Wi-Fi7 and will operate on WiFi 6/6E speeds when configured for WiFi7. The Bluetooth wireless card version may vary depending on the operating system that is installed on your computer.
4. Configurations with 5G not available at launch. Feature availability timelines will vary based on region and laptop configuration. 5G module is optional and must be selected at purchase. 4G and 3G Backwards compatible. Actual speeds will vary depending on the carrier network, users, location and other factors. Subject to service provider's subscription and coverage area. Additional charges will apply. Contact service provider for details.
5. Based on Dell internal analysis, November 2024.
6. Security: Based on Dell internal analysis, October 2024. Applicable to PCs on Intel processors. Not all features available with all PCs. Additional purchase required for some features. Validated by Principled Technologies. A comparison of security features, April 2024. Manageability: Based on Dell internal analysis, January 2024. Most-manageable commercial PCs when comparing the systems management capabilities of Dell Update Processes, Dell Manageability Solution capabilities and integrations with 3rd Party Management Solutions, with competitor update processes, systems management solution capabilities and integrations with 3rd party management solutions. 3rd Party Management Solutions - Microsoft Intune, Workspace ONE, are separate purchases. Intel vPro, to support out-of-band systems management, is an additional system configuration upgrade.
7. Applies to Dell Pro, Dell Pro Plus, and Dell Pro Premium notebooks launching in 2025. Based on internal comparison of the solder connection on Latitude 7450 vs screwed connection testing data of the Dell Pro Premium laptop subject to a repeated standard wrenching torque in multiple directions. New USB-C port design is as screwed on connection for easier repairs and improved durability. Read warranty information for USB-C port replacement instructions.
8. Based on internal analysis, November 2024. Up to 98% post-consumer recycled plastic in the battery frame, bezel frame, inner frame of the top cover, bottom cover and speaker housing, 46% bio-based rubber bumpers, 28% recycled ocean-bound plastic in the fan housing and 80% less cobalt in the 45whr battery. Cobalt reduction in the battery is 80% reduced cobalt use in NCM battery technology compared with LCO battery technology.

### Page 3

1. Based on IDC Worldwide Quarterly Personal Computing Device Tracker, Nov 6, 2024 – Units.
2. Based on internal analysis and testing, November 2024. McAfee's Deepfake Detector running on devices with Intel® Core™ Ultra 200V series processors was compared to previous-generation Intel® Core™ Ultra processors. Results may vary.
3. Copilot+ PC experiences require free updates. Timing varies by device and region.
4. Based on internal analysis and testing, November 2024. Cyberlink's Promoe AI Magic Designer running on devices with Intel® Core™ Ultra 200V series processors was compared to previous-generation Intel® Core™ Ultra processors.

### Page 4

1. Based on internal analysis, November 2024. 50% Low emissions and 50% recycled aluminum in the top cover and palmrest .Cobalt reduction in the battery (45 whr) is 80% reduced cobalt use in NCM battery technology compared with LCO battery technology.
2. Based on internal analysis. Entry battery(45 whr) uses NCM technology and has 80% lesser cobalt compared to LCO technology. Upsell battery (55 whr) is made with 50% recycled cobalt.
3. Based on internal analysis, November 2024.
4. Applies to Dell Pro, Dell Pro Plus, and Dell Pro Premium notebooks launching in 2025. Based on internal comparison of the solder connection on Latitude 7450 vs screwed connection testing data of the Dell Pro Premium laptop subject to a repeated standard wrenching torque in multiple directions. New USB-C port design is as screwed on connection for easier repairs and improved durability. Read warranty information for USB-C port replacement instructions.
5. Contains up to 93% recycled content and up to 7.2% renewable content in the form of sustainably forested materials. Excludes optional items added to order and included in box.
6. Based on internal analysis, November 2024.
7. Based on internal analysis, November 2024. Based on EPEAT Climate+ Designations achieved in all applicable countries. EPEAT registered where applicable. EPEAT registration varies by country.

Page 6

1. Based on Dell internal analysis, October 2024. Applicable to PCs on Intel processors. Not all features available with all PCs. Additional purchase required for some features. Validated by Principled Technologies. A comparison of security features April 2024.
2. Dell publishes a device drivers and downloads release schedule. Source: Based on internal analysis, May 2023. When comparing publicly available device drivers and downloads release schedules published by the Top 5 PC vendors, as of May 2023.
3. Dell performs integrated validation of all driver and BIOS modules in an update. Source: Based on Dell internal analysis, May 2023, of integrated validation approaches of Top 5 PC vendors, for driver and BIOS modules in an update, by currently shipping and future-state product system images.
4. Capabilities of Dell Update Processes, Dell Management Portal and Dell Manageability Solutions capabilities and integrations with 3<sup>rd</sup> Party Management Solutions, with competitor update processes, partner portal capabilities in Microsoft Intune systems management solution capabilities and integrations with 3<sup>rd</sup> party management solutions. 3<sup>rd</sup> Party Management Solutions - Microsoft Intune, Workspace ONE, are separate purchases. Intel vPro, to support out-of-band systems management, is an additional system configuration upgrade; and Dell has the industry's first:
  - a. Based on Dell internal analysis - October 2024. Based on Dell Management Portal capabilities in Microsoft Intune compared to competitor Partner Portal capabilities in Microsoft Intune. Dell Command | Endpoint Configure for Microsoft Intune - the industry's first Binary Large Object (BLOB) package-based solution, for securely configuring & managing endpoints, using Microsoft Intune. Disclaimer: Industry's first device manageability solution to use a Binary Large Object (BLOB) package, recognized by Microsoft Intune, for secure endpoint configuration and management.
  - b. Dell Command | Intel vPro Out of Band– the industry's first hardware OEM systems management solution to integrate with Intel vPro - for remote management of systems, regardless of power-state. Disclaimer: Based on Dell internal analysis, November 2023
  - c. Dell Command | Intel vPro Out of Band– the industry's first hardware OEM systems management solution to integrate with Intel vPro - for remote management of systems, regardless of power-state. Disclaimer: Based on Dell internal analysis, November 2023
5. Dell Client Device Manager application availability planned for late January 2025.

Page 7

1. Based on Dell internal analysis, April 2023. Payment solutions provided to qualified commercial customers by Dell Financial Services through Dell Technologies group companies or authorized business partners. Solutions may be changed without notice and are subject to product availability, eligibility, credit approval, acceptable documentation and local applicable law. Some solutions, including end of term purchase options, may not be available or may vary by country. Within the EU, the EEA, the UK and Switzerland certain solutions are provided by Dell Bank International d.a.c. and its local branches, including by Dell Bank International d.a.c Sucursal en España in Spain. Dell Bank International d.a.c. is regulated by the Central Bank of Ireland. Dell Technologies and Dell logos are trademarks of Dell Inc.
2. Dell Technologies has recovered 2.8 billion pounds of electronics since 2007. Source: Based on Dell internal analysis of publicly available data, April 2023.
3. ProDeploy Client Suite for PCs configures 30K PC daily. Source: Based on Dell internal analysis, April 2023.
4. ProSupport Suite for PCs saves 641 hours of IT admin time per year\* (on recurring tasks for a 1,000-device fleet. \*vs. a manual approach based on data extrapolated from hands-on testing). Source: Based on a Principled Technologies test report, "Simplify PC management and save IT admin time with an automated support service," dated September 2023. Testing commissioned by Dell, conducted in the United States. Actual results will vary.
5. Based on a Forrester Total Economic Impact™ Study Commissioned by Dell Technologies and AMD, "The Total Economic Impact™ Of Dell Premier," February 2024.

Page 8-13

1. Offering may vary by country, hardware configuration, and/or operating system.
2. Intel® Core™ Ultra Series 2 (V) processors feature memory-on-package. Each processor option includes either 16GB or 32GB of LPDDR5x memory.
3. Intel® Arc™ GPU memory is shared with system memory and capacity will based on processor selection.
4. GB means 1 billion bytes and TB equals 1 trillion bytes; actual capacity varies with preloaded material and operating environment and will be less than stated.
5. WiFi 7 requires the latest Wi-Fi Alliance certification, certified device driver, hardware update, supported OS version and compatible router. Router requires a separate purchase. Wi-Fi 7 connectivity is only available in select locations. Check availability with your service provider. The Bluetooth wireless card version may vary depending on the operating system that is installed on your computer.
6. Mobile Broadband antenna and module available only at time of system purchase. Mobile Broadband subject to service provider's broadband subscription and coverage area; additional charges apply. eSim technology subject to regional carrier/service provider availability & service provider's data plan subscription; additional charges apply. Check availability with your service provider.
7. The stated Watt Hour (Wh) is not an indication of battery life. Express Charge 1.0 (EC1.0) enables quick battery charging to 80% capacity in 60 minutes or 100% capacity in 120 minutes. Express Charge Boost (ECB) enables quick battery charging to 35% capacity in 20 minutes. Charging patterns for EC1.0 and ECB are measured for the system in a shutdown state. Long life cycle battery options have a charging pattern that enables longer life. Long-life cycle battery options are capable of 3 years life or 1000 discharge/charge cycles, and Dell provides a 3-year limited hardware warranty for these battery options.
8. Limited Hardware Warranty: For copy of Limited Hardware Warranty, write Dell USA LP, Attn: Warranties, One Dell Way, Round Rock, TX 78682 or see [www.dell.com/warranty](http://www.dell.com/warranty).
9. Height may vary depending on configuration. Height represents the maximum system thickness excluding the system rubber feet.
10. Weights vary depending on configuration and manufacturing variability.



<b>Business Solutions</b>	<b>Enterprise Solutions</b>	<b>Public Sector Solutions</b>
1.800.800.0014	1.800.369.1047	1.800.800.0019
<a href="http://www.connection.com/Dell">www.connection.com/Dell</a>		