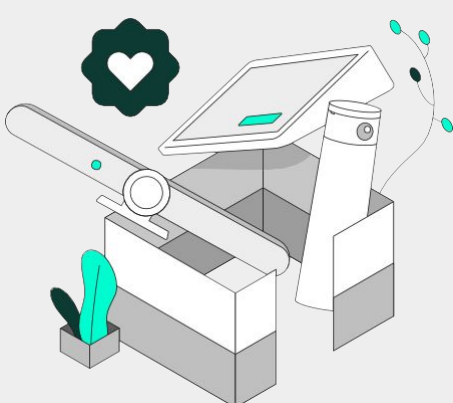


# Rooms to grow

Explore Logitech's range of room solutions, specially designed to elevate any meeting space. User-friendly, high quality conferencing solutions suitable for any room size and compatible with many software platforms.



## Complete your team workspace

Create an equitable hybrid environment with premium video and audio technology.

**9 in 10**

Nearly 9 in 10 remote employees say video helps them feel **more connected**.

Source: ZDNet

<p><b>Collab OS</b></p> <p>Seamless integration and multi-platform compatibility</p>	<p>Adaptable solutions for evolving business needs</p>	<p><b>Logi Sync</b></p> <p>Streamlined operation and management</p>	<p>Sustainability: designing a positive future, together</p>	<p>Verified security, protecting your assets.</p>
--------------------------------------------------------------------------------------	--------------------------------------------------------	---------------------------------------------------------------------	--------------------------------------------------------------	---------------------------------------------------

## Follow the path to growth.

### START

Identify the room profile that best fits your needs.

<p>Huddle Room up to 4</p>	<p>Ideation Room up to 12</p>	<p>Conference Room up to 20</p>	<p>Immersive Room more than 20</p>
--------------------------------	-----------------------------------	-------------------------------------	----------------------------------------

Microsoft Teams zoom Google Meet

### STEP 1

## Video first

Choose the right conference camera solution for simple and flexible video conferencing for any room.

- o Flexible deployments
- o Easy installation
- o Integration with leading video conferencing platforms
- o Remote management

<p><b>Rally Bar</b> 960-001308 \$3,999 MSRP</p>	<p><b>Rally Bar + Tap IP</b> 991-000419 \$4,699 MSRP</p>
<p><b>MeetUp2</b> 960-001691 \$899 MSRP</p>	<p><b>Rally Bar Huddle</b> 960-001485 \$1,699 MSRP</p>

\*other options available.

### STEP 2

## Design the room

Maximum productivity and efficiency for rooms of any size, shape or use case.

- o Simplified control
- o Enhanced audio
- o Immersive video
- o Whiteboard collaboration for hybrid teams
- o Room scheduling

<p><b>Tap IP</b> 952-000085 \$699 MSRP</p>	<p><b>Tap Scheduler</b> 952-000091 \$699 MSRP</p>	<p><b>Sight</b> 960-001510 \$1,999 MSRP</p>
<p><b>Scribe</b> 960-001332 \$1,199 MSRP</p>	<p><b>Mic Pods</b> 960-000430 \$349 MSRP</p>	

### STEP 3

## Make it work

Flexible configuration of space and solutions with a range of mounts.

<p><b>Mic Pod Mount</b> 952-000002 \$69 MSRP</p>	<p><b>Rally Bar Mount</b> 952-00041 \$179 MSRP</p>	<p><b>Tap Mount</b> 952-000080 \$199 MSRP</p>
----------------------------------------------------------	------------------------------------------------------------	-------------------------------------------------------

### STEP 4

## Improve user experience

Easy connection to virtually any video-conferencing platform with a single cable.

<p><b>Extend</b> 952-000188 \$799 MSRP</p>	<p><b>Swytch</b> 952-000009 \$999 MSRP</p>
----------------------------------------------------	----------------------------------------------------

### STEP 5

## Protect the investment

Gain access to technical expertise, advanced tools, and analytics to ensure minimal downtime and optimal performance.

- o Coverage and Support
- o Advanced Hardware Replacement
- o Proactive Software

<p><b>Select Service</b> Complete coverage to reduce daily management, optimize performance and access fast-track support. Starting at \$249/room/year</p>
<p><b>Essential Service</b> For advanced device and space management tools. Starting at \$199/room/year</p>
<p><b>Extended Warranty</b> Add protection for up to five years. Starting* at \$69/room/year</p>

\*these steps represents sample solutions. For a full list of available options, visit our [Room Configurator](#).  
\*Prices vary based on SKUs

## See how our solutions work in a Conference Room

### Get Started

- + Rally Bar \$3,999 MSRP
- + Rally Mic Pod \$349.99 MSRP
- + Logitech Sight \$1,999 MSRP

### Attach

- + Tap Scheduler \$699 MSRP
- + Rally Mic Pod CAT Coupler \$99.99 MSRP
- + Logitech Swytch or Extend \$999 MSRP / \$799 MSRP
- + Mic Pod Mount \$69.99 MSRP
- + Select Service \$399 MSRP



This solution ensures participants around the table can be seen and heard, by clearly capturing voices, faces, and other in-room content with **intelligent software** and **powerful technology**.

## New Room Configurator

Use the new and improved Room Configurator tool to design your optimized meeting room.



Contact your Connection Account Team for more information.



Business Solutions 1.800.800.0014	Enterprise Solutions 1.800.369.1047	Public Sector Solutions 1.800.800.0019
--------------------------------------	----------------------------------------	-------------------------------------------

[www.connection.com/logitech](http://www.connection.com/logitech)