

# SHARP®

# PN-LC862 PN-LC752 PN-LC652

AQUOS BOARD® Interactive Display Systems



# AQUOS BOARD®

**4K**  
3840 × 2160 Pixels

# Enjoy A More Natural Way of Working

The PN-LC2 AQUOS BOARD® range of smart interactive displays combines genuine 4K Ultra-HD resolution and an intuitive “Pen-on-Paper” user experience. The single USB-C connector makes it so simple to walk into a room, plug in your device and start working together straightaway. The PN-LC2 AQUOS BOARD interactive displays also feature an integrated controller with whiteboard, overlay and wireless functionality to help enhance your productivity.



## Built-in Apps

The PN-LC2 series are the perfect choice for busy office environments, boardrooms, classrooms and training sessions that require quick, responsive operation and smart, integrated collaboration tools. They encourage effective group teamwork, promote idea sharing and help people deliver great presentations and achieve better meeting outcomes.

As well as incorporating a range of useful pre-installed apps, settings and configurations, they enable quick and easy-to-use video conferencing. This launcher also provides fast access to Sharp's innovative Synappx™ Go application that helps to remove frustrations and tech related hassles to bring simply smarter meetings into the workplace. Synappx Go enables quick and engaging video conferences, especially with the optional PN-ZCMS1 AV Soundbar.

## See Every Little Detail

To ensure that groups can collaborate more effectively in corporate environments, everything needs to be displayed clearly and precisely. The displays help people absorb information more easily, so they stay focused and engaged and can contribute more proactively. The PN-LC2 AQUOS BOARD range of large format interactive displays is available with a choice of 86" class (85.6" diagonal) 75" class (74.5" diagonal), and 65" class (64.5" diagonal) screen sizes to suit almost any office environment, classroom or meeting room.

They also deliver a true 4K reading experience as they feature a 3840 x 2160 Ultra High Definition (UHD) 4K resolution display and touchscreen. The LCD technology delivers high contrast and visual clarity, ensuring that even the most detailed presentations, documents and diagrams can be easily viewed and read. It is ideal for exploring very detailed data and technical designs, particularly within businesses operating in the finance, engineering, architecture, healthcare, consulting, energy, retail markets and educational institutions.

## All the flexibility you need

The ability to adapt to changing requirements quickly and effectively is essential to ensuring that businesses always operate with maximum productivity and efficiency.

The open architecture design of the Sharp PN-LC2 AQUOS BOARD provides exceptional flexibility and freedom of use, so it can meet the demands of even the most challenging corporate environments. You can easily connect to various types of PC sources with its USB-C, HDMI, and VGA connectors. This allows you to display almost any type of content with a 4K resolution, or select any type of 4K video content from a media player using the CEC HDMI output. In addition, it has the latest high-speed, high-bandwidth USB-C port, which can be used for multiple functions and has a rotationally symmetrical design, so there is no connection confusion.

It can also wirelessly share information with any smart Windows, Android, iOS, Chrome or other mobile device without unsightly cables, complex add-on peripherals, or bulky power supplies. Or you can utilize the OPS slot to instantly extend the AQUOS BOARD interactive display's functionality with third-party add-ons and solutions. Finally, it supports the use of Touch Back, so that whatever is shown, drawn or controlled on the AQUOS BOARD will be replicated on the connected smart devices.

Its versatile connectivity ensures that you can easily create the optimum conditions to encourage creativity, boost productivity and enable effective decision making, without being hampered by any unnecessary technical complexity.

## Added Productivity as Standard

The PN-LC2 AQUOS BOARD interactive displays come with a range of standard software to help get the most out of your meetings or presentations. It is easy to install and use and does not require any technical expertise.

- **Pen software for Windows®**  
Provides quick and easy access to pen settings and other useful functions. It allows you to add onscreen annotations or graphics directly onto photos, videos, PDFs and common Microsoft® files. You can also control presentations, adjust the screen set-up and store or email any files you have been working on.
- **eShare app**  
Supports multifaceted wireless casting\*, so content on the screen, including images, audio and video, can be shared simultaneously with multiple other devices. No cables are required, so there is no stress, hassle or delay in sharing information.
- **Touch Viewer software for Windows®**  
Offers an easy-to-use interface and file system to collect, manipulate and organize a variety of different files on the screen without actually opening the respective applications.
- **Applications to Energize the Classroom**  
In addition, the PN-LC2 AQUOS BOARD interactive displays include a built-in whiteboard app with easy to use annotation tools. Additionally, screen recorder, timer, web browser, PDF viewer and voting apps make it easy for teachers to actively engage students for more effective lessons.

\* Compatible with Windows®, Android™, iOS®, macOS®, iPadOS®, Chrome™ OS

## Simply Smarter Meetings

Successful collaboration can be realized in simply smarter meetings where everyone can have a great experience, no matter where the individuals may be. That means making it easy to share their best ideas by removing the tech hassles for both laptop and mobile users. By integrating Sharp Synappx Go and the optional PN-ZCMS1 AV Soundbar, with the PN-LC862, PN-LC752 and PN-LC652, users can not only share their best ideas, but can do so easily and quickly. Here are some of its key features:

- Connecting and ending your meetings are easy to do, whether you are in a web conference session or in a shared space with connection to in-room meeting tech.
- No more rummaging for meeting content. Access and share your best ideas by quickly pulling up meeting content and sharing it with everyone in the meeting, whether they are in the room or attending virtually.
- Mobile users can also control and share their files from their smartphone, just as they would from a laptop.



# Specifications

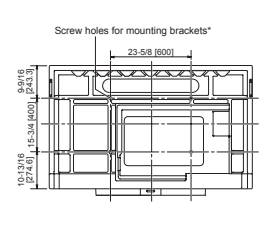
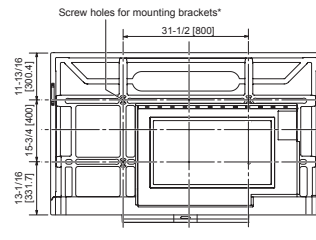
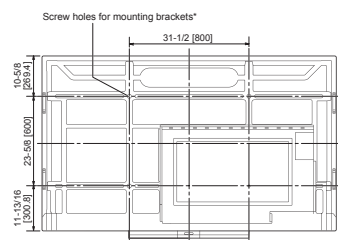
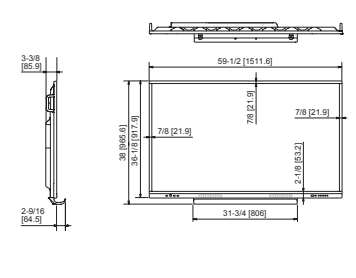
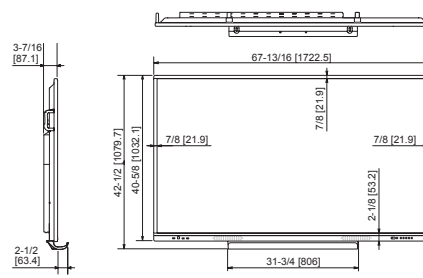
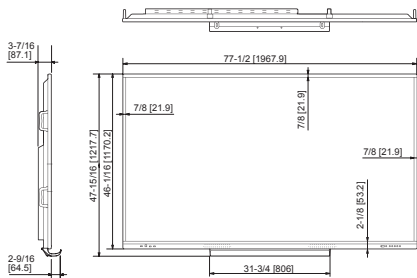
Model Name		PN-LC862	PN-LC752	PN-LC652
Installation		Landscape		
LCD Panel		86" Class (85-9/16" diagonal) TFT LCD	75" Class (74-1/2" diagonal) TFT LCD	65" Class (64-1/2" diagonal) TFT LCD
LCD Panel	Max. Resolution	3,840 × 2,160 pixels		
	Max. Display colors (approx.)	1.07 billion colors		
	Pixel Pitch (HxV)	0.494 mm (H) × 0.494 mm (V)	0.430 mm (H) × 0.430 mm (V)	0.372 mm (H) × 0.372 mm (V)
	Max Brightness (standard value) *1	450 cd/m <sup>2</sup>		
	Contrast ratio	1,200 : 1		
	Viewing Angle (H/V) *2	178°/178° (CR 10)		
	Active Screen Area (W x H) (approx.)	74-7/8" x 41-15/16"	64-15/16" x 36-9/16"	56-1/2" x 31-5/8"
Touchscreen	Response Time	8 ms (grey to grey, avg.)		
	Backlight	LED, direct lit		
	Touch Technology	IR (Infrared blocking detection method) with zero-bonding technology		
	PC Connection Port	USB (3.0 compliant) (Type B) x 2 (Front x 1, Rear x 1)		
	Power Supply for touchpanel	Supplied from main unit		
	Multi Touch	20 points		
	Protection Glass	Thickness: Approx. 3.2 mm Shock resistance: 130 cm <sup>13</sup>		
Terminals *4	Input	Dual-sided passive pen x2		
	Output	HDMI (HDCP2.3 compatible, CEC compatible) x 1		
System	Front	HDMI (HDCP2.3 compatible, CEC compatible) x 2, USB Type-C (DisplayPort 1.2 Alt mode, HDCP 2.3, USB Power Delivery 65W compatible, Touch signal, USB pass through) x 1, Display Port (DisplayPort 1.2, HDCP compatible) x 1, Mini D-sub 15-pin x 1, AV mini jack x 1, 3.5 mm-diameter mini stereo jack x 1		
	Rear	HDMI x 1, 3.5 mm-diameter mini stereo jack x 1, S/PDIF x 1		
System	Front	USB 3.0 TypeA x 2, USB 3.0 TypeB (for touch) x 1		
	Rear	USB 3.0 TypeA x 2, USB 3.0 TypeB (for touch) x 1		
	System	USB 3.0 TypeA x 2, USB 3.0 TypeB (for touch) x 1, LAN port (10Base-T/100Base-TX/1000BASE-T) x 1, RS-232C IN x 1		
	System	CPU: Arm® Cortex® - A55 processor (quad core)		
Expansion Slot	Memory	4GB		
	Internal Storage	16GB		
	Wireless LAN	IEEE802.11ac/n/a/g/b (Use Wireless USB Adaptor)		
	Expansion Slot	OPS Slot (19 V, 4.74 A, 90 W)		
Speaker Output	15 W + 15 W w/front facing speakers			
Mounting	4 points, 800 x 600 mm pitch, M8 screw	4 points, 800 x 400 mm pitch, M8 screw	4 points, 600 x 400 mm pitch, M8 screw	
Power Supply *5	100V - 240 V AC, 50/60 Hz			
Power Consumption (Factory Setting (Shipment) / Max rating)	260 W / 500 W	200 W / 420 W	180 W / 390 W	
Environmental Conditions	Operating Temperature *6	41°F to 95°F (5°C to 35°C)		
	Operating Humidity *7	20% to 80% RH (no condensation)		
Dimensions (W x D x H) (approx.)	77-1/2 x 3-7/16 x 46-1/16 inch	67-13/16 x 3-7/16 x 40-5/8 inch	59-1/2 x 3-3/8 x 36-1/8 inch	
Weight (approx.)	143.3 lbs.	112.4 lbs.	84.9 lbs.	
Packaging Dimensions (W x D x H) (approx.)	86 x 8-7/8 x 56-1/4 inch	75-13/16 x 8-7/8 x 49 inch	66-5/16 x 8-7/8 x 44-7/16 inch	
Packaging Weight (approx.)	207.2 lbs.	166.4 lbs.	133.4 lbs.	
Bezel width	21.9 mm (Left, Right, Top), 53.2 mm (Bottom)			
Main Accessories	AC power cord, remote control unit, remote control unit battery (AAA size) x 2, set-up manual, blank sticker, cable clamp x 3, USB cable, pen tray, touch pen x 2, Wireless Adapter			

\*1 Without Glass. Brightness depends on input mode and other picture settings. Brightness level will decrease slightly over the lifetime of the product. Due to the physical limitations of the equipment, it is not possible to maintain a precisely constant level of brightness. \*2 excluding the touch sensor part around the LCD panel. \*3 Approximate distance at which the glass panel can withstand the impact of a 500-gram iron ball dropped on its center. \*4 Use a commercially available connection cable for PC and other video connections. \*5 The AC power cord is an inlet type. The cable is bundled (3 pins). \*6 Temperature conditions may change when using the monitor together with the optional equipment. In such cases, check the temperature conditions specified by the optional equipment. \*7 Check the requirements of the computer and other devices to be connected, and make sure that all requirements are satisfied.

## PN-LC862

## PN-LC752

## PN-LC652



Units: Inch (mm)



## Optional PN-ZCMS1 AV Soundbar



PN-ZCMS1 AV Soundbar Specifications		
Camera	Pixels	12MP
	Field of view	120°
	Zoom	Max. 5x
Microphone	Resolution	Max. 3,840 x 2,160
	Adjustable Angle	Up 15°, Down 15° (manual)
	Voice Pickup Range	8 meters
Speaker	Mic Array	6 Elements
	Output Power	8 watts