

Solving seven classroom challenges: A guide for educators and leaders on Windows 11 and Windows 11 SE

Just about every school has similar challenges in their classrooms. Here are ways Microsoft's easy-to-use devices and software help educators, leaders, and IT staff tackle common problems.

#1

My students have diverse learning needs.

SOLUTION

Microsoft is committed to inclusion for learners of all abilities.

- ✔ Windows 11 and Windows 11 SE have a **comprehensive suite of built-in assistive technology** – at no extra cost – to support inclusion for students who have different learning styles and needs.
- ✔ Voice Typing allows you to **quickly jot down ideas** without needing a keyboard.
- ✔ Color Filters comes with six **built-in options to increase visibility** for users with vision loss or color-blindness.

#2

My students struggle with reading!

SOLUTION

Microsoft has a tool for that!

- ✔ Immersive Reader is integrated across Windows, Edge, and all Microsoft applications. This tool **helps learners break down words** with proven techniques to improve reading for students, regardless of their age or ability.
- ✔ Students can also **magnify the cursor** and **activate real-time closed captions**. All of these controls are easily accessible, right from the action center.

#3

Our budget is limited!
We need affordable devices
that run the software and
tools I need for my students.

SOLUTION

Microsoft's new devices solve for that!

- ✔ Windows 11 and Windows 11 SE education devices start at \$249 USD.
- ✔ Microsoft's new, **cloud-first, budget-friendly** Windows 11 SE devices are **optimized for K-8 students**. They run offline as well as online versions of familiar Microsoft Office apps, like Microsoft Word, OneNote, and Excel.
- ✔ Windows 11 SE devices include multiple **tools for learning, vision, hearing, and mobility differences**, at no extra cost.

#4

My students have trouble logging on at the start of class.

SOLUTION

Microsoft offers single sign-on, to start the day off right!

- ✔ Single sign-on **automatically logs students into their apps** at the start of class. This can reduce distraction and the need for teacher help.

#5

My students sometimes can't find their work.

SOLUTION

Microsoft has got you covered!

- ✔ The **Start menu opens center screen**, so students can find their work easily.
- ✔ With Windows 11 SE, students see only **cloud-based file storage options**, so they can locate their work more independently, without teacher assistance.
- ✔ Students can access files on their computer and on the web using **voice commands**.

#6

My students are clicking around on apps and games instead of focusing on their work!

SOLUTION

Microsoft understands that distraction can get in the way of learning.

- ✔ The good news? The Microsoft Store is *automatically blocked* on Windows 11 SE devices, so **students can't download apps**.
- ✔ Windows 11 SE devices allow **only IT pros and teachers to install apps on student devices**. This helps students stay focused on school. It also enhances security and simplifies device management.

#7

My students get confused by their open windows!

SOLUTION

Microsoft has built student-centric devices with key features that help students stay on track.

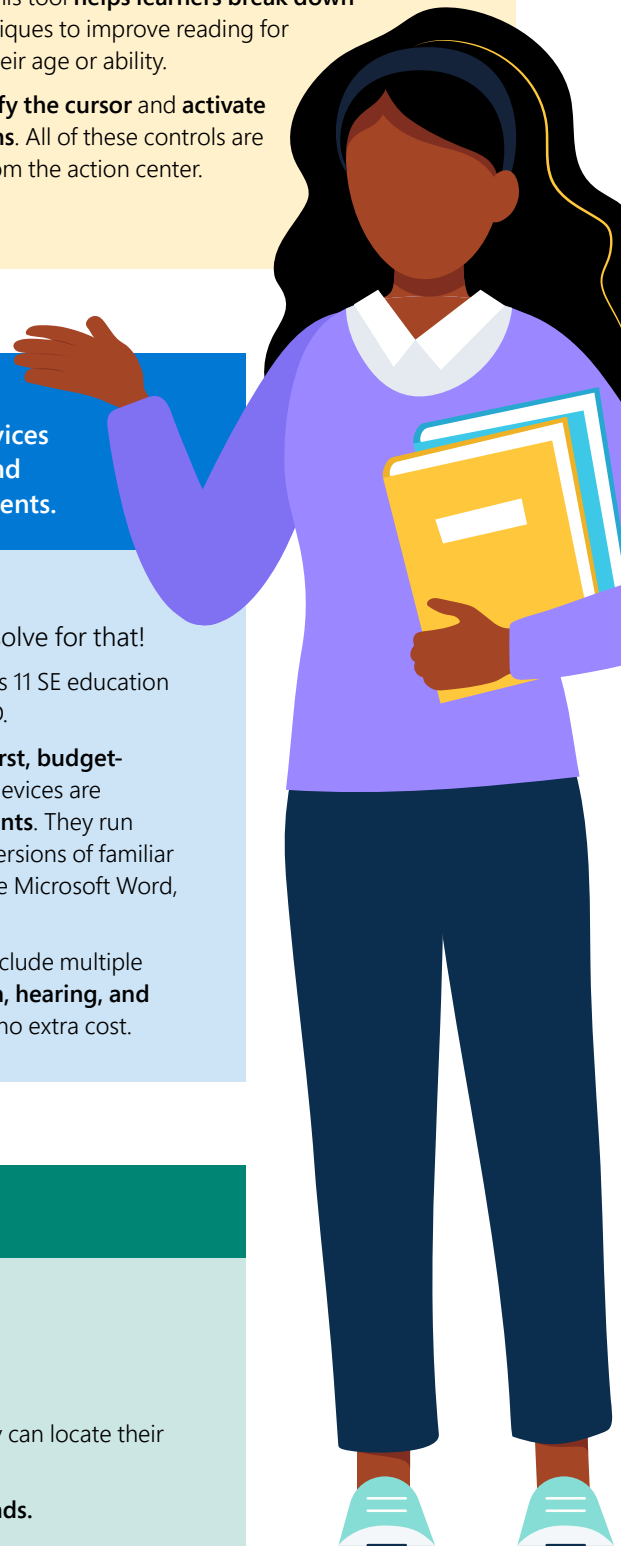
- ✔ Windows 11 SE limits Snap Assist to allow **only two open windows** at a time.
- ✔ All apps launch *full screen* in Windows 11 SE to **help reduce distractions** in the classroom

✔ EXCLUSIVE WINDOWS 11 SE FEATURE

We've created a series of courses to provide innovative educators with core information about features and resources included in Windows 11 and Windows 11 SE – tools that help unlock the full potential of every student, giving them powerful ways to learn, collaborate, and create in a secure and trusted environment.



Learn more about the new features and tools that support school leaders and educators.



Solving seven classroom challenges: A guide for educators and leaders on Windows 11 and Windows 11 SE

Just about every school has similar challenges in their classrooms. Here are ways Microsoft's easy-to-use devices and software help educators, leaders, and IT staff tackle common problems.

#1

My students have diverse learning needs.

SOLUTION

Microsoft is committed to inclusion for learners of all abilities.

- ✔ Windows 11 and Windows 11 SE have a **comprehensive suite of built-in assistive technology** – at no extra cost – to support inclusion for students who have different learning styles and needs.
- ✔ Voice Typing allows you to **quickly jot down ideas** without needing a keyboard.
- ✔ Color Filters comes with six **built-in options to increase visibility** for users with vision loss or color-blindness.

#2

My students struggle with reading!

SOLUTION

Microsoft has a tool for that!

- ✔ Immersive Reader is integrated across Windows, Edge, and all Microsoft applications. This tool **helps learners break down words** with proven techniques to improve reading for students, regardless of their age or ability.
- ✔ Students can also **magnify the cursor** and **activate real-time closed captions**. All of these controls are easily accessible, right from the action center.

#3

Our budget is limited!
We need affordable devices
that run the software and
tools I need for my students.

SOLUTION

Microsoft's new devices solve for that!

- ✔ Windows 11 and Windows 11 SE education devices start at \$249 USD.
- ✔ Microsoft's new, **cloud-first, budget-friendly** Windows 11 SE devices are **optimized for K-8 students**. They run offline as well as online versions of familiar Microsoft Office apps, like Microsoft Word, OneNote, and Excel.
- ✔ Windows 11 SE devices include multiple **tools for learning, vision, hearing, and mobility differences**, at no extra cost.

#4

My students have trouble logging on at the start of class.

SOLUTION

Microsoft offers single sign-on, to start the day off right!

- ✔ Single sign-on **automatically logs students into their apps** at the start of class. This can reduce distraction and the need for teacher help.

#5

My students sometimes can't find their work.

SOLUTION

Microsoft has got you covered!

- ✔ The **Start menu opens center screen**, so students can find their work easily.
- ✔ With Windows 11 SE, students see only **cloud-based file storage options**, so they can locate their work more independently, without teacher assistance.
- ✔ Students can access files on their computer and on the web using **voice commands**.

#6

My students are clicking around on apps and games instead of focusing on their work!

SOLUTION

Microsoft understands that distraction can get in the way of learning.

- ✔ The good news? The Microsoft Store is *automatically blocked* on Windows 11 SE devices, so **students can't download apps**.
- ✔ Windows 11 SE devices allow **only IT pros and teachers to install apps on student devices**. This helps students stay focused on school. It also enhances security and simplifies device management.

#7

My students get confused by their open windows!

SOLUTION

Microsoft has built student-centric devices with key features that help students stay on track.

- ✔ Windows 11 SE limits Snap Assist to allow **only two open windows** at a time.
- ✔ All apps launch *full screen* in Windows 11 SE to **help reduce distractions** in the classroom

✔ EXCLUSIVE WINDOWS 11 SE FEATURE

We've created a series of courses to provide innovative educators with core information about features and resources included in Windows 11 and Windows 11 SE – tools that help unlock the full potential of every student, giving them powerful ways to learn, collaborate, and create in a secure and trusted environment.



Learn more about the new features and tools that support school leaders and educators.