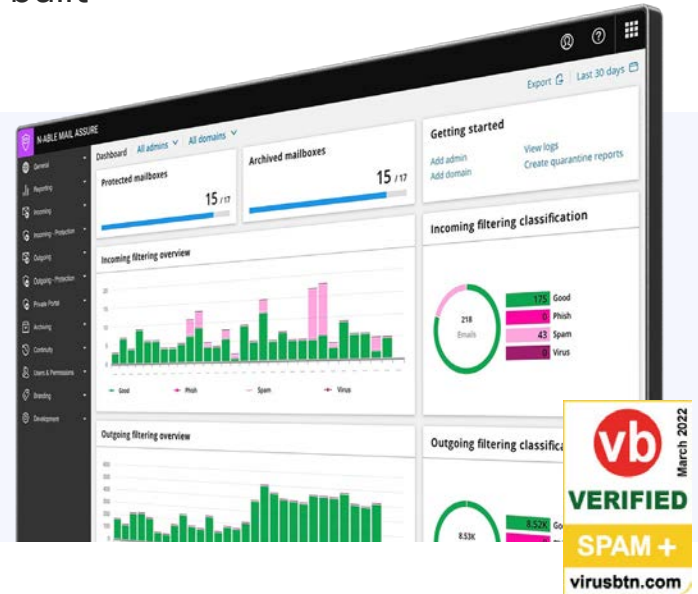


# N-able Mail Assure

Stay safe and in control with email security built on collective intelligence

N-able Mail Assure cloud-based email security helps you stay in control and protect inbound and outbound email using collective threat intelligence, 24/7 email continuity, and long-term email archiving.



Are you wasting time mitigating spam and malware? Do you have to constantly educate employees to think twice before opening that festive card or clicking on a potential malicious link that could be a phishing attack? N-able™ Mail Assure can help you manage it all at an affordable price.

Mail Assure is a cloud-based solution designed to provide inbound and outbound email security using collective threat intelligence, 24/7 email continuity, and long-term email archiving. Even if a business has a primary layer of security, as with Microsoft 365™, our solution provides added control and an additional level of defense, built to protect against spam, viruses, malware, phishing, ransomware, and other email-borne threats.

### Mail assure is designed to provide:

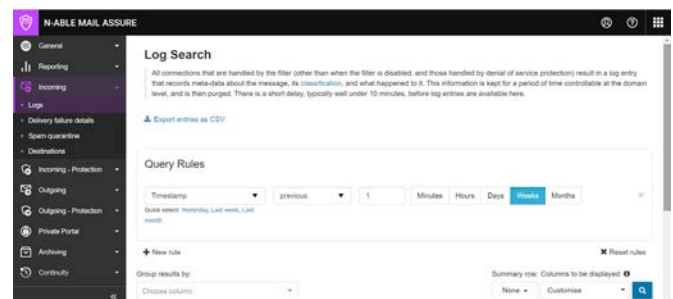
- Protection and control for inbound and outbound email
- Data loss prevention and long-term data storage with email archiving
- 24/7 built-in email continuity
- Layered security for affordability and ease of use
- Malware catch rate of 100.00%, with zero false positives and the ability to process all messages in under 30 seconds per message according to the [VBSpam public testing](#)

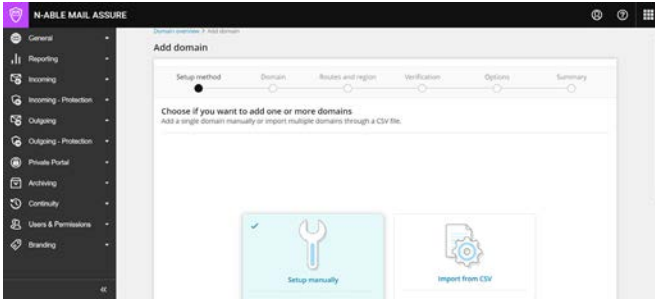
### Benefits at a glance

**Protection and control for inbound and outbound email**

**Defend against both known and emerging email-borne threats.**

Using technology developed in-house, Mail Assure cuts out the risk of a black-box situation where IT doesn't fully control what happens in the technology stack. The Mail Assure Intelligent Protection & Filtering Engine incorporates data from over two million domains under management to help protect you from email-borne threats—with 2B+ spam messages blocked per month.





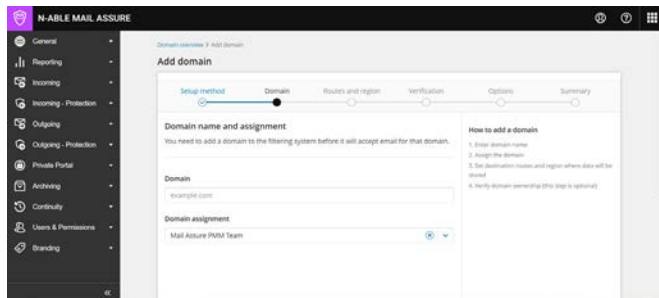
## Reduce resources spent on managing email security

Mail Assure is a cloud- and SMTP-based solution that helps keep costs and maintenance low since there is no need for hardware (or ongoing maintenance). The setup is easy—simply add domains, change MX records, and let the solution do its job.

## Gain visibility over your email flow

The Mail Assure multitenant web interface works right out of the box, with predefined settings, reporting, and views built for your technicians and end users, allowing for more control over your email. Quarantine management and email scout reports give technicians and users visibility over email flow, including options to release, remove, block, or approve messages with preventive measures to minimize accidental blocking or releasing. Automated abuse reports indicate which users/ accounts are sending out spam from your network, enabling your technicians to directly lock down abused accounts to help prevent IP blocking and protect your company reputation.

## Retain and easily access email communication



## Engineered with 24/7 built-in email continuity

A 14-day email queue support (if your primary email service is offline) is included by default. Mail Assure will attempt to continue to deliver email and will store emails in the incoming delivery queue for viewing. Web-based networking tools give you visibility into server downtime and outage issues, and our full fallback MX service helps ensure emails are delivered.

## Help enhance business productivity

Email outages and downtime could cost you time—and potentially business. Mail Assure 24/7 email continuity gives users the ability to receive, send, and reply to email directly from the Mail Assure dashboard—or their mobile devices during outages or downtime.

## Keep a secure history of email communication

Robust encryption in transit (using TLS encryption) and at rest (using AES encryption) help keep your archive data secure.

## Layered security designed for affordability and ease of use

### Gain robust protection for Microsoft 365, Exchange™ Online and G-suite™ users

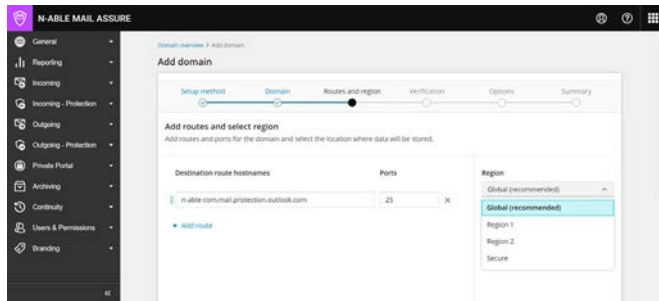
Many email collaboration tools or other email offerings can lack the level of visibility and control you get with a professional email security solution. Mail Assure helps provide increased protection, visibility, and control against email threats and leverages a network of highly available global data centers to provide 24/7 email continuity in the case of Microsoft® or Google® outages or downtime.

## Reduce data loss with long-term email archiving

Mail Assure robust encrypted email archiving includes journaling support to help users easily pull emails from existing Microsoft environments. The Mail Assure solution also includes advanced content and attachment-based search to help simplify finding and retrieving archived emails. Compressed storage for all inbound and outbound emails helps keep your data usage and costs low.

## Benefit from control over your email flow

The feature-rich GUI offers users authentication control and capabilities like LDAP and SSO. Regional data storage support gives IT managers the ability to select a specific region for storage of logs, quarantine, and archive data if needed for legal or compliance purposes.



## N-able Mail Assure product feature details

### Email security for inbound and outbound email

- Protection via our Intelligent Protection & Filtering Engine that incorporates data from our user base to help prevent known and emerging threats
- Easy setup that lets you simply add domains and change MX records
- A multitenant web interface with views built for both admins and end users
- Advanced log-search functionality and email scout reports for greater visibility
- Quarantine management to give users the power to view, release, remove, block, or approve messages
- Advanced domain and filter settings management for checks, permissions, and spam scoring thresholds
- Mailbox auto-detection via SMTP or synchronization via LDAP to simplify getting started
- Approve and block management for added control
- Advanced filtering statistics, such as number of spam messages filtered, viruses blocked, or total email volume

- Extension and attachment blocking management (e.g., .zip, .zar, or .pdf) to help protect against zero-day malware
- User and permission management for transparency and control
- SSL/TLS traffic encryption to assist in securely transmitting email when possible
- Granular configuration per user/IP domain
- Smart host deployment for outbound email filtering to block spam and viruses from leaving the organization and help protect IP reputation
- Optional DKIM signatures to outgoing emails to help ensure sender authenticity and protect your sender reputation
- 14-day email queue support—even if the primary service is offline for two weeks, Mail Assure will continue attempting to deliver email and store emails in the incoming delivery queue
- Web-based access to archived emails and email quarantine even during an outage
- Ability to send and receive email directly from the Mail Assure dashboard
- Immediate action from Mail Assure during an outage so users can log in, receive, and send emails from the dashboard without delay
- Web-based networking tools to help you diagnose issues
- Visibility into server downtime and outages
- Accessible via mobile devices, so users can send and receive email even if they don't have their computer handy
- Full fallback MX service included to help ensure emails are delivered

### Robust encrypted email archiving

- Compressed storage of inbound and outbound emails to keep data usage and costs low
- Robust encryption in transit (using TLS encryption) and at rest (using AES encryption) to help keep data secure
- The ability to import archive data from other solutions or your existing infrastructure to ease migration



- Archive export to allow you to transfer data if needed
- Custom retention period to give you the control to meet individual user's requirements
- Ability to enable or disable archiving per mailbox to help you manage storage requirements
- Multiple storage locations around the world to help you meet geographic storage requirements
- Advanced content and attachment-based search to help simplify finding and retrieving emails
- Advanced redelivery to allow users to send email from the archive to an inbox
- Optional per-email download
- Fast indexed search option for logs
- Journaling support to help you easily pull in emails from existing Microsoft environments
- Web-based email and attachment viewing

### Private portal

- End users, who are a common source of vulnerability for MSPs, can now view and reply to sensitive emails inside a secure web-mail system
- Emails stored in private portal are deleted after 30 days—a necessary measure against attackers who search inbox history for critical information
- Messages sent through private portal are encrypted with standard TLS in transit, through every stage, and with AES-256 at rest
- Private portal is included at no additional cost in the Mail Assure protection offering and does not require any new software to be installed



Contact an Account Manager for more information.  
1.800.800.0014 • [www.connection.com/N-able](http://www.connection.com/N-able)

## About N-able

N-able fuels IT services providers with powerful software solutions to monitor, manage, and secure their customers' systems, data, and networks. Built on a scalable platform, we offer secure infrastructure and tools to simplify complex ecosystems, as well as resources to navigate evolving IT needs. We help partners excel at every stage of growth, protect their customers, and expand their offerings with an ever-increasing, flexible portfolio of integrations from leading technology providers.

© 2022 N-able Solutions ULC and N-able Technologies Ltd. All rights reserved.

The N-able trademarks, service marks, and logos are the exclusive property of N-able Solutions ULC and N-able Technologies Ltd. All other trademarks are the property of their respective owners.

This document is provided for informational purposes only and should not be relied upon as legal advice. N-able makes no warranty, express or implied, or assumes any legal liability or responsibility for the information contained herein, including for the accuracy, completeness, or usefulness of any information contained herein.